

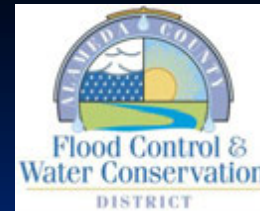
Request for Proposal



Civil Engineering Services for Alameda County Water District Pipeline Relocation Design in Alameda County



Request for Proposal



The Alameda Flood Control and Water Conservation District (District) is seeking Proposals from firms (Consultants) for Designing pipeline relocations of Alameda County Water District (ACWD) existing facilities that are in conflict with District improvements.



Minimum Qualifications



Consultants shall demonstrate that they have satisfactorily completed the design for:

- At least two (2) steel potable water pipeline projects, 24-inch diameter minimum, within the last five years
- Possess a working knowledge with American Water Works Association (AWWA) requirements and design guidelines
- Provide minimum of two (2) references for similar services. For each reference, the Consultant shall supply a brief description of the services provided, the timeframe services were provided and contact information.

ACWD Pipeline Relocation



Project Objective:

Satisfactorily prepare and complete design and construction bid documents to relocate existing ACWD pipelines in conflict with proposed District improvements



Fremont

Lemos Lane

Fremont Blvd

Auto Mall Pkwy

Cushing Pkwy

238

880

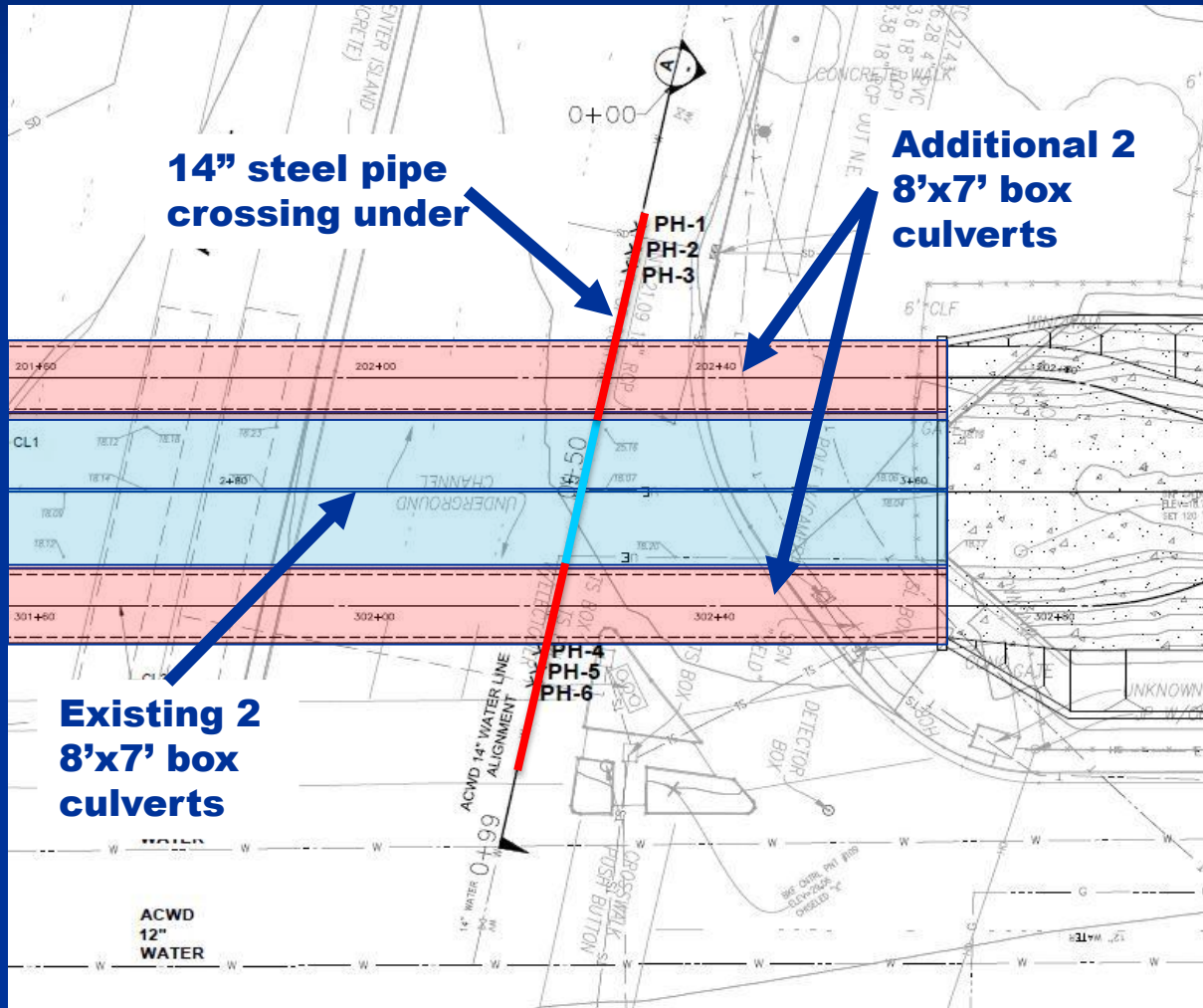
680

262

© 2014 Google

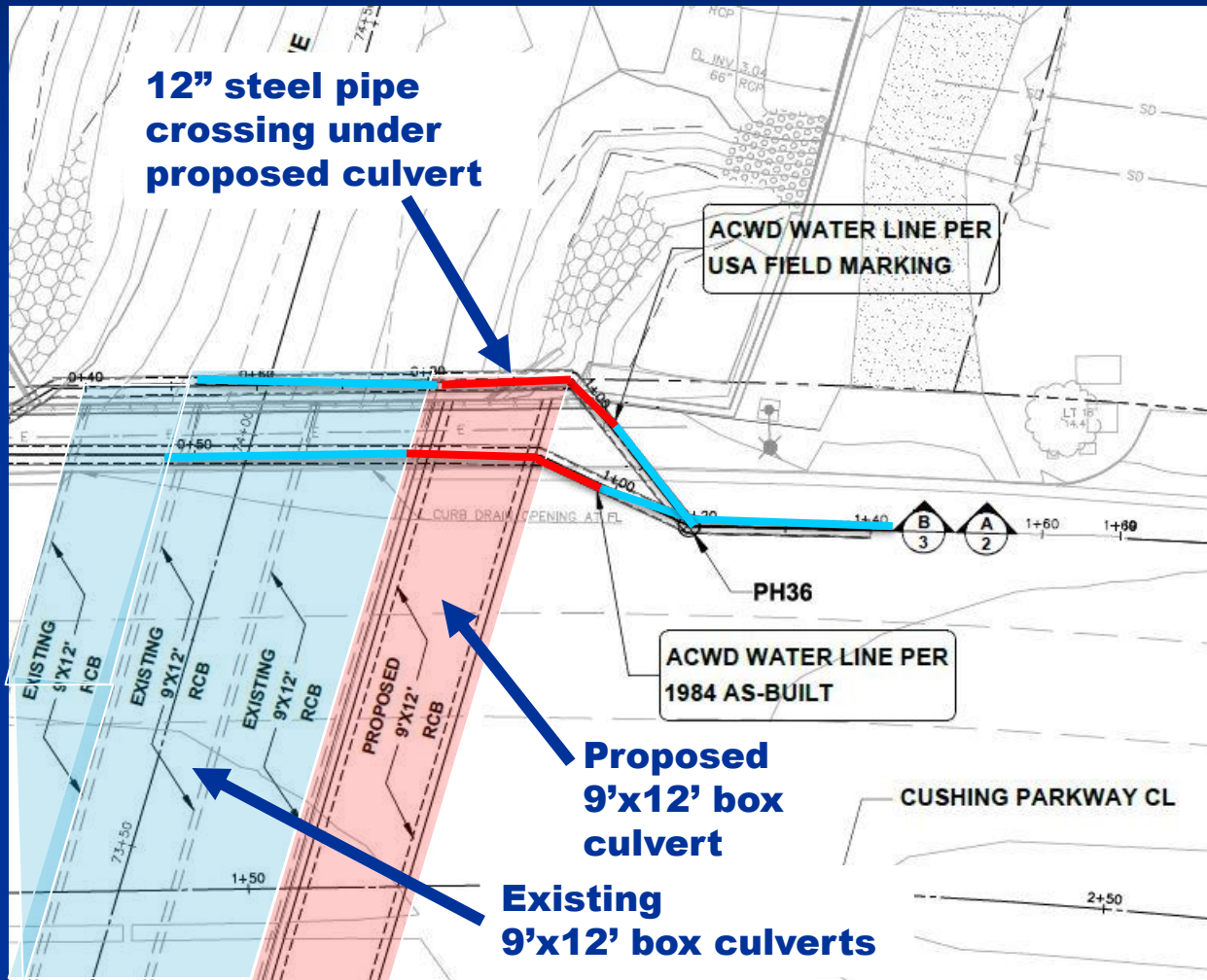
ACWD Pipeline Relocation

Auto Mall Parkway



ACWD Pipeline Relocation

Cushing Parkway

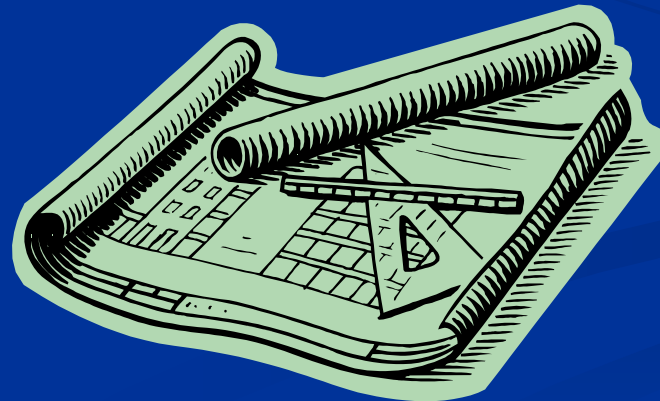


ACWD Pipeline Relocation

General Project Information

Design Requirements

Pipeline and appurtenances shall be designed in accordance with the *American Water Works Association (AWWA) M11* and *ACWD* requirements, unless otherwise directed by the District.

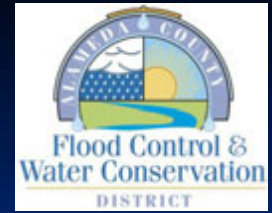




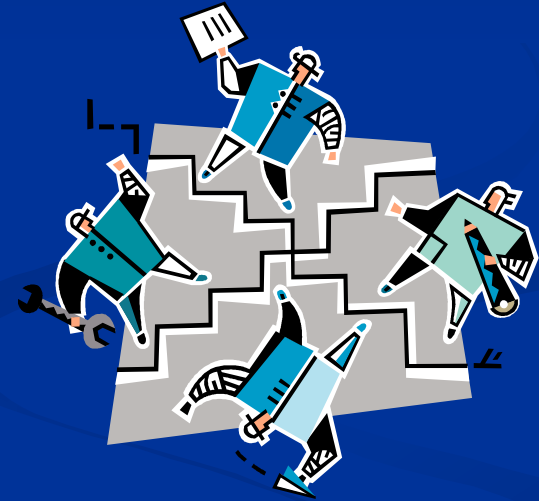
ACWD Pipeline Relocation

- General Project Design Completion Schedule (subject to change)
- Auto Mall Pkwy. – 14-inch Pipeline Relocation:
 - Design January 30, 2015 – Construction Summer 2015
- Lemos Lane – 12-inch Pipeline Relocation:
 - Design January 30, 2015 – Construction Summer 2016
- Fremont Blvd. – 30-inch Pipeline Relocation:
 - Design March 31, 2015 – Construction Summer 2015
- Fremont Blvd. – 12-inch Pipeline Relocation:
 - Design March 31, 2015 – Construction Summer 2016
- Cushing Pkwy. – 12-inch Pipeline Relocation:
 - Design March 31, 2015 – Construction Summer 2016

Conduct of Study



This assignment is intended to be a cooperative effort between the District, ACWD and consultant staff. The Consultant is expected to provide all the necessary technical resources and skills, expertise, support services and related project management.



Form of Proposal

(Section IV of RFP)



- A. Transmittal Letter
- B. Title Page
- C. Table of Contents
- D. Proposal Content
 - 1. Overview and Summary
 - a) Understanding purpose of project as specified in Section II of RFP
 - b) Summary of Consultant's overall approach
 - 2. Project Delivery Schedule
 - 3. Management Plan
 - a) Organizational work assignments structure
 - b) Staffing plan (names, titles, qualifications) for key personnel and assignments
 - c) Management approach – discuss role of prime consultant and sub-consultant
 - d) Any other activities not included in Section II that you propose
 - e) SLEB participation
 - f) Q/A and Q/C Procedures



Evaluation Criteria

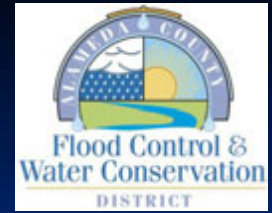
- All proposals will be evaluated by District Selection Committee (DSC). The DSC will review and rank proposals in accordance with evaluation criteria set forth in the RFP.
- Two preference criteria will be used during evaluation and allow for a total of 10% increase in scoring
 1. Local Preference: Five percent (5%)
 2. Certified Small or Emerging: Five percent (5%)



SLEB Participation

- The District supports Alameda County's efforts to contract with small local emerging businesses (SLEBs). The County's requirement is to have at least 20 percent of the contract work be performed by Alameda County SLEB-certified firm(s). Indicate whether proposing firm(s) and other firms serving as sub-consultants are certified as Alameda County SLEBs. Indicate the percentage of work to be performed by SLEBs. Indicate if prime Consultant has an office located in Alameda County.
- For more information regarding the SLEB program, go to: <http://www.acgov.org/auditor/sleb>

Important Dates



- **Proposal Submittal Deadline:** Wednesday, July 16, 2014 at 4:00 PM PST
- **Proposal Ranking:** by July 25, 2014
- **Oral Interviews:** Week of August 4, 2014
- **Oral Interview Ranking:** by Friday, August 8, 2014
- **Contract Negotiation with No. 1 ranked firm:** Begin week of August 18, 2014
- **Board Approval on Contract:** September 23, 2014



Any questions contact:

Mr. Moses Tsang, P.E.

Supervising Civil Engineer

Phone: (510) 670-6549

Email: moses@acpwa.org