

CASTRO VALLEY



MUNICIPAL
ADVISORY
COUNCIL

Advisory to Supervisor Nate Miley, 4th District

224 W. Winton Avenue, Suite 111, Hayward, CA, 94544 (510) 670-5400 FAX (510) 785-8793

NOTICE IS HEREBY GIVEN
that the
CASTRO VALLEY MUNICIPAL ADVISORY COUNCIL
will hold a Public Hearing on
VESTING TENTATIVE TRACT MAP AMENDMENT, PLN2015-00224

SRE DEVELOPMENT COMPANY/MIKE SULLIVAN - VESTING TENTATIVE TRACT MAP AMENDMENT PLN2015-00224, PRELIMINARY REVIEW ~ Petition to review the proposal to amend the approved Vesting Tentative Tract map 7530 (approved in 2005 as "Boundary Creek LLC") from 28 to 21 parcels, reconfigure street layout, reconfigure lot pattern, revised and centralized bio-retention/storm water treatment facilities, reduced grading, reduced retaining walls and increased setbacks from creek and conservation areas, located at 4524 Crow Canyon Place, approximately 500 feet south of Crow Canyon Road, Castro Valley area of unincorporated Alameda County, bearing Assessor's Parcel Numbers: 084C-1068-001, 084C-1068-007, 084C-1068-008.

Copies of the proposed plans and exhibits are available for public inspection at the Alameda County Planning Department, 224 W. Winton Ave., Room 111, Hayward, 94544.

An Environmental Impact Report (EIR) was certified analyzing the environmental impacts of the previously approved Vesting Tentative Tract map. Pursuant to the California Environmental Quality Act (CEQA) section 15164, an Addendum to the previously approved EIR will be prepared.

The Castro Valley Municipal Advisory Council will be held at 6:00 p.m. on Monday, December 14, 2015, in the Castro Valley Library, Chabot Room, 3600 Norbridge Avenue, Castro Valley.

All interested parties are welcome to attend and present oral testimony. Written testimony may also be submitted to the Council at the Planning Department office prior to the hearing and will be considered in the Council's discussion. This is a preliminary hearing only for informational purposes. No action will be taken on this application.

Contacts:

Staff Planner:

Sonia Urzua, Senior Planner

(510) 670-5400

sonia.urzua@acgov.org

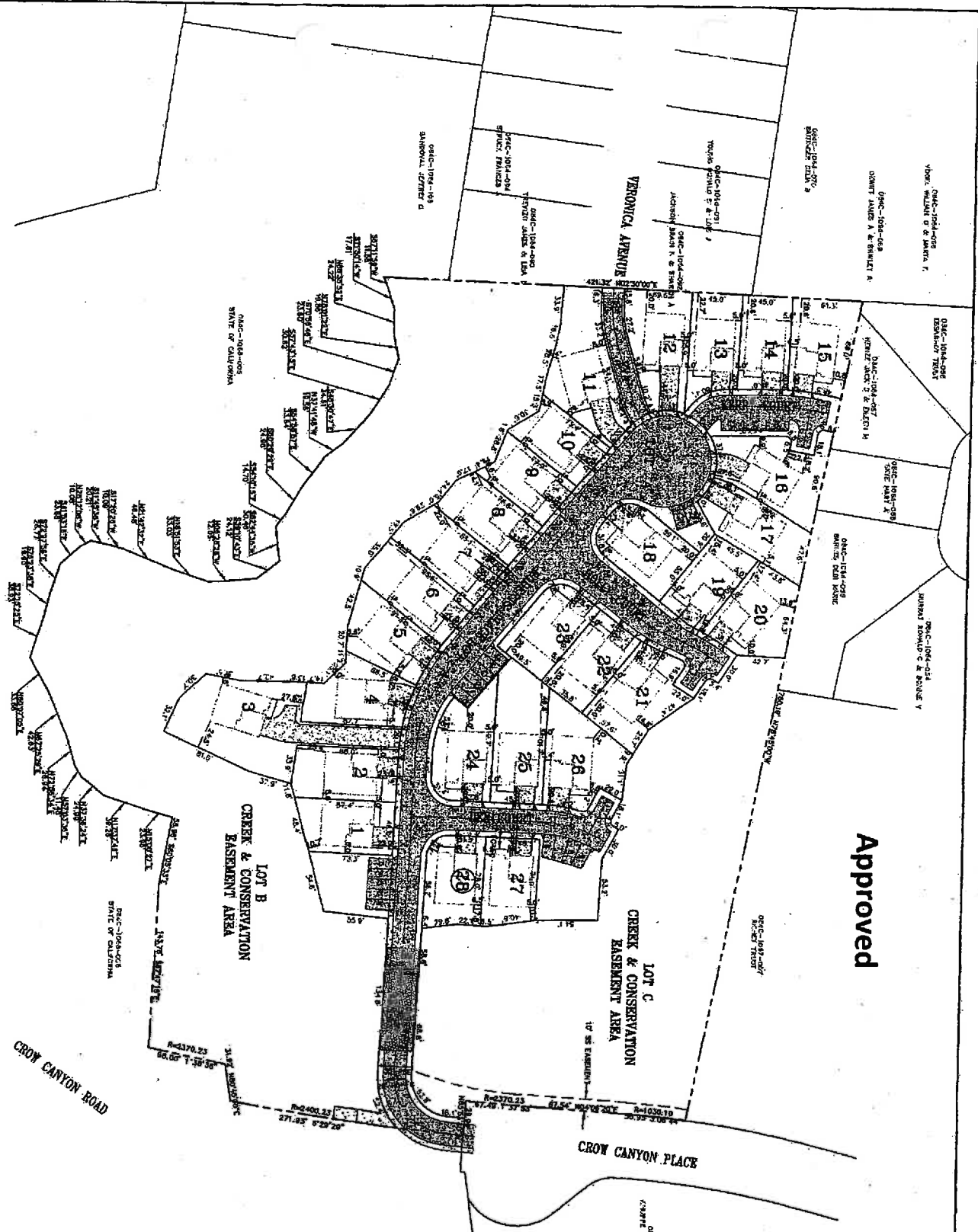
Applicant:

SRE Development Company

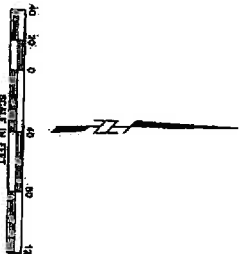
Attn: Mike Sullivan

Office: 408-819-0615

Mike@srecompany.com

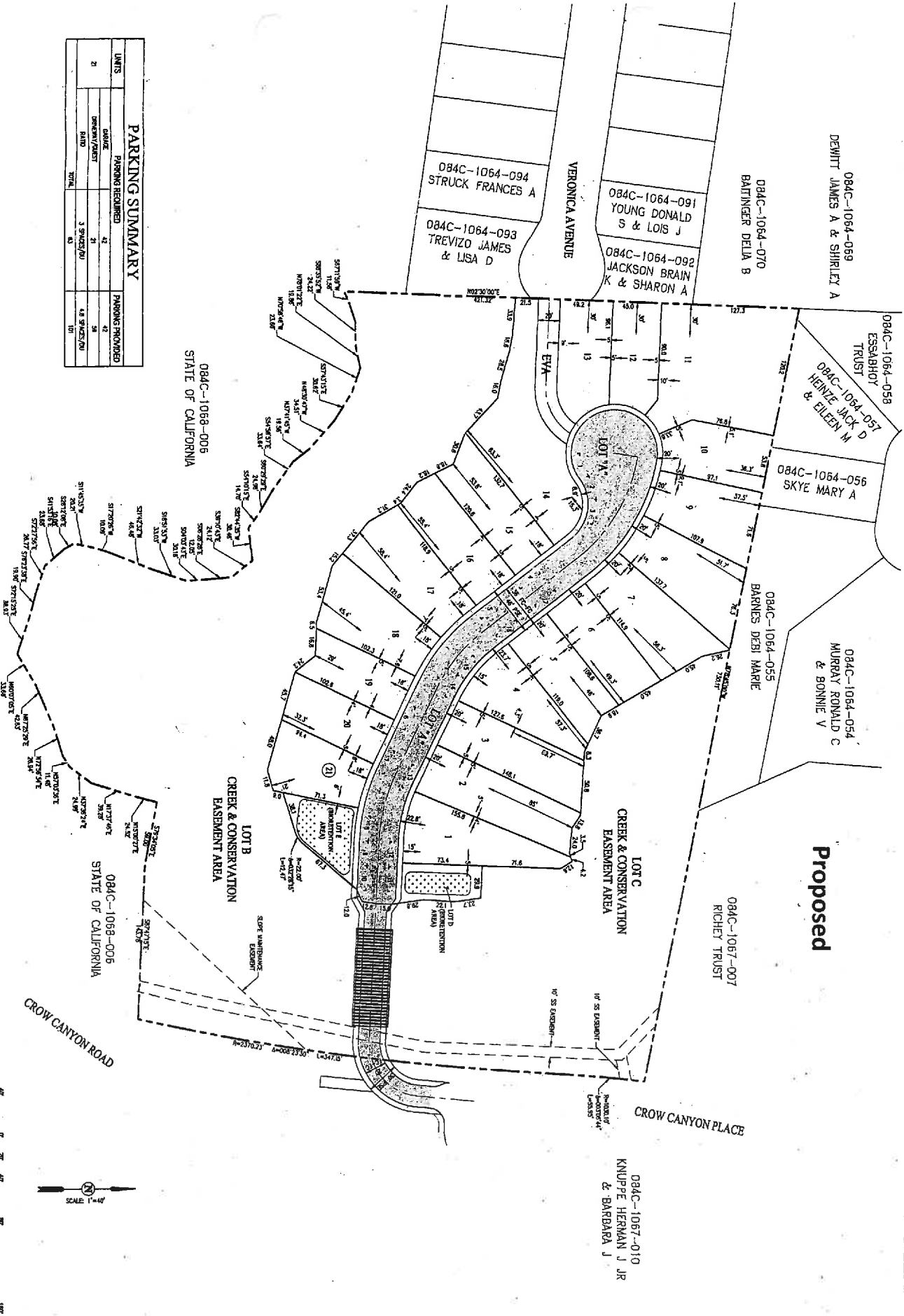


Approved



<p>TENTATIVE MAP BOUNDARY CREEK TRACT 7530</p>			<p>UDI-TETRAD CONSULTING ENGINEERS, INC. Civil - Power - Communications</p>	<p>NO. BY DATE</p>	<p>REVISIONS</p>	<p>APPROVAL</p>
<p>CASTRO VALLEY</p>				<p>1. E.M. 8-28-05</p>	<p>APPROVED TENTATIVE MAP SUBMITTED PER ALAMEDA COUNTY BOARD OF SUPERVISORS MEETING 8-28-05</p>	

PARKING SUMMARY			
UNITS	PARKING REQUIRED	PARKING PROVIDED	
21	42	42	42
	DRIVEWAY/PAV'T	21	21
	BLVD	3 SPACES/10'	4.8 SPACES/10'
	TOTAL	42	101



084C-1068-006
STATE OF CALIFORNIA

084C-1068-006
STATE OF CALIFORNIA

LOT B
CREEK & CONSERVATION
BASEMENT AREA

LOT C
CREEK & CONSERVATION
BASEMENT AREA

Proposed

CROW CANYON ROAD

CROW CANYON PLACE



TENTATIVE MAP
BOUNDARY CREEK
TRACT 7530

CASTRO VALLEY

CALIFORNIA



Carlson, Barbee & Gibson, Inc.
CIVIL ENGINEERS • SURVEYORS • PLANNERS
2633 Center Pointe, Suite 200 • San Ramon, CA 94583
925-299-0232
www.cbgi.com

NO.	BY	DATE	REVISIONS	APPROVAL

DESIGNED: STAFF
DRAWN: MKA
CHECKED: LRB
SCALE: 1"=40'
SHEET NO. 2 OF 6
JOB NO. 152230