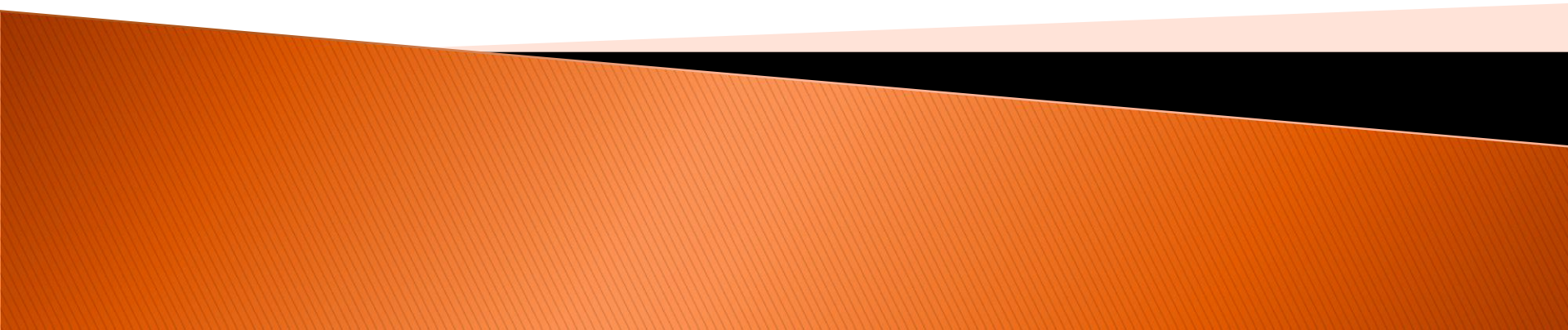


# Policies for Siting Solar Energy Facilities in Rural Alameda County

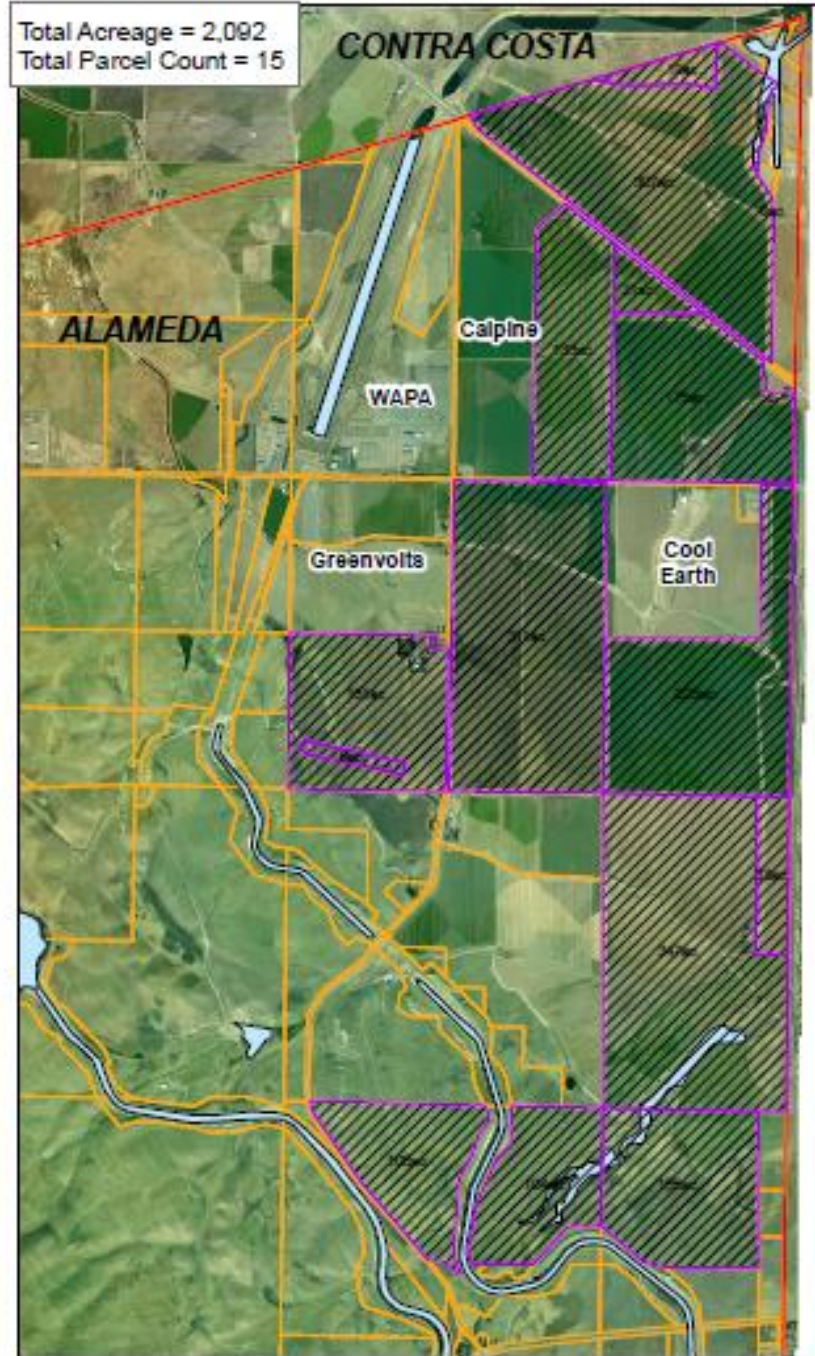


# Renewables Portfolio Standard

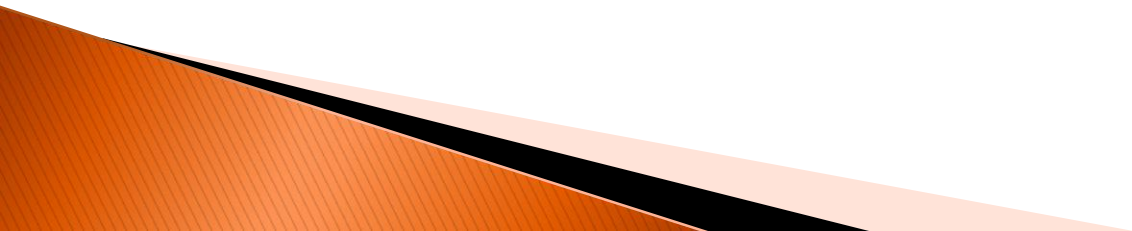
- ▶ Requires utilities to obtain 33% of electricity from renewable energy sources by 2020.
- ▶ Requires almost tripling generation of renewable electricity from 27 terawatt hours (TWh) in 2009 to about 75 TWh in 2020. (CPUC, June 2009)

# Mountain House

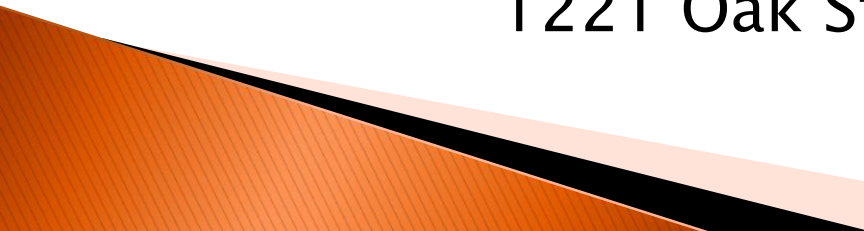
- ▶ Close to two PG&E substations.
- ▶ Close to urbanized area for shorter transmission distance.
- ▶ Flat terrain makes installation and operation easier.



# Considerations in Rural Areas

- ▶ Natural Resources
  - ▶ Agricultural Resources
  - ▶ Visual Resources
- 

# Process

- ▶ May 24<sup>th</sup> – Agricultural Advisory Committee
  - ▶ June 16<sup>th</sup>–Environmental Community Meeting
  - ▶ June 23<sup>rd</sup>–General Community Meeting  
6:00p.m. County Public Works Building  
4825 Gleason Drive, Dublin
  - ▶ Sept. 13<sup>th</sup>–Board of Supervisors Planning Meeting  
1:00p.m. Administration Building, Board Chambers  
1221 Oak Street, 5th Floor, Oakland
- 

# Contact Information

- ▶ Liz McElligott
- ▶ [elizabeth.mcelligott@acgov.org](mailto:elizabeth.mcelligott@acgov.org)
- ▶ (510) 670-5400
- ▶ Alameda County Planning Department  
224 West Winton Avenue, Room 111  
Hayward, CA 94544
- ▶ [www.acgov.org/cda/planning/landuse  
projects/solarpolicies.htm](http://www.acgov.org/cda/planning/landuse/projects/solarpolicies.htm)

Comments and Questions?