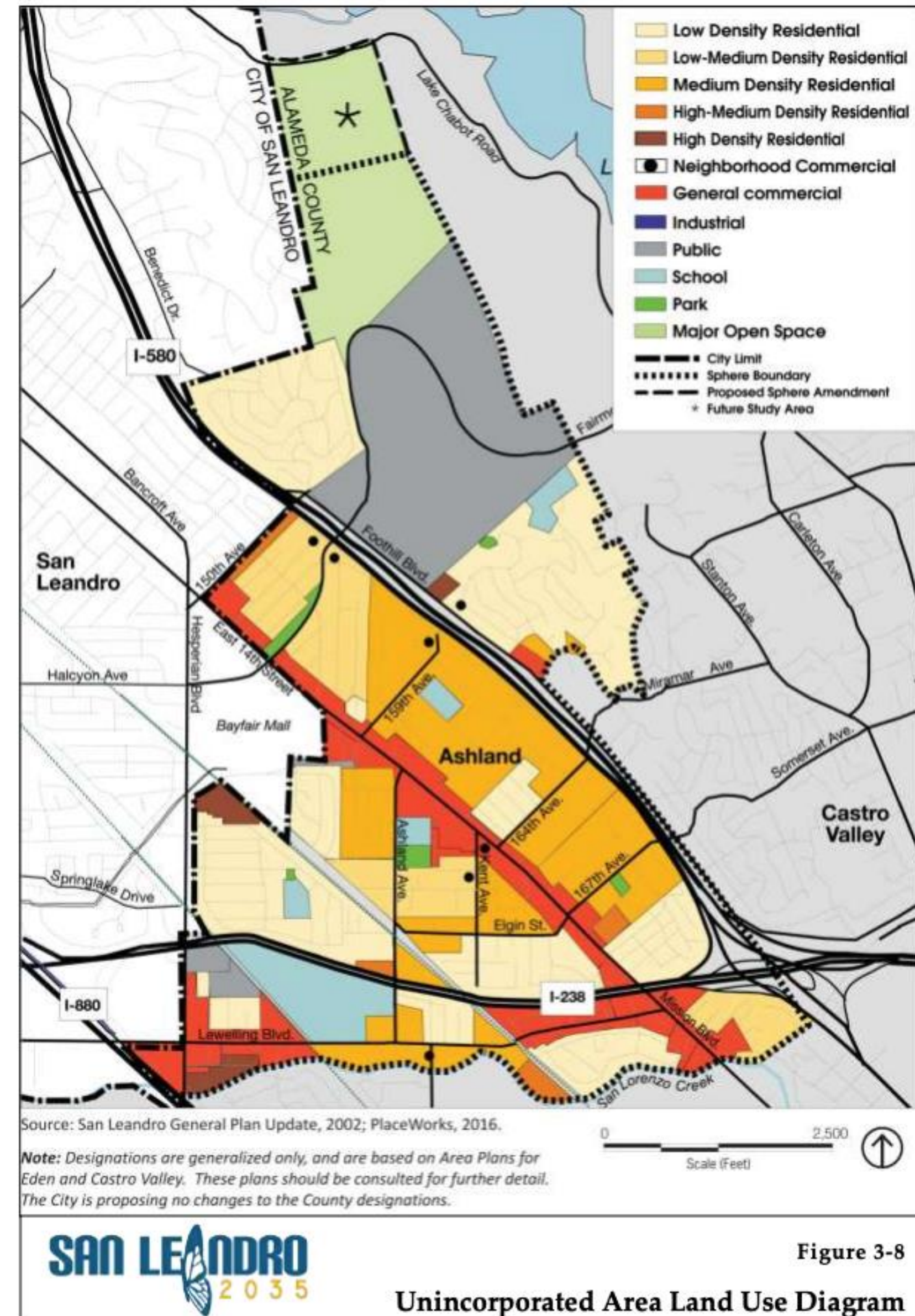


Our shared identities

San Leandro Ashland Castro Valley

Shared concerns
Shared destiny
and overlapping jurisdictions

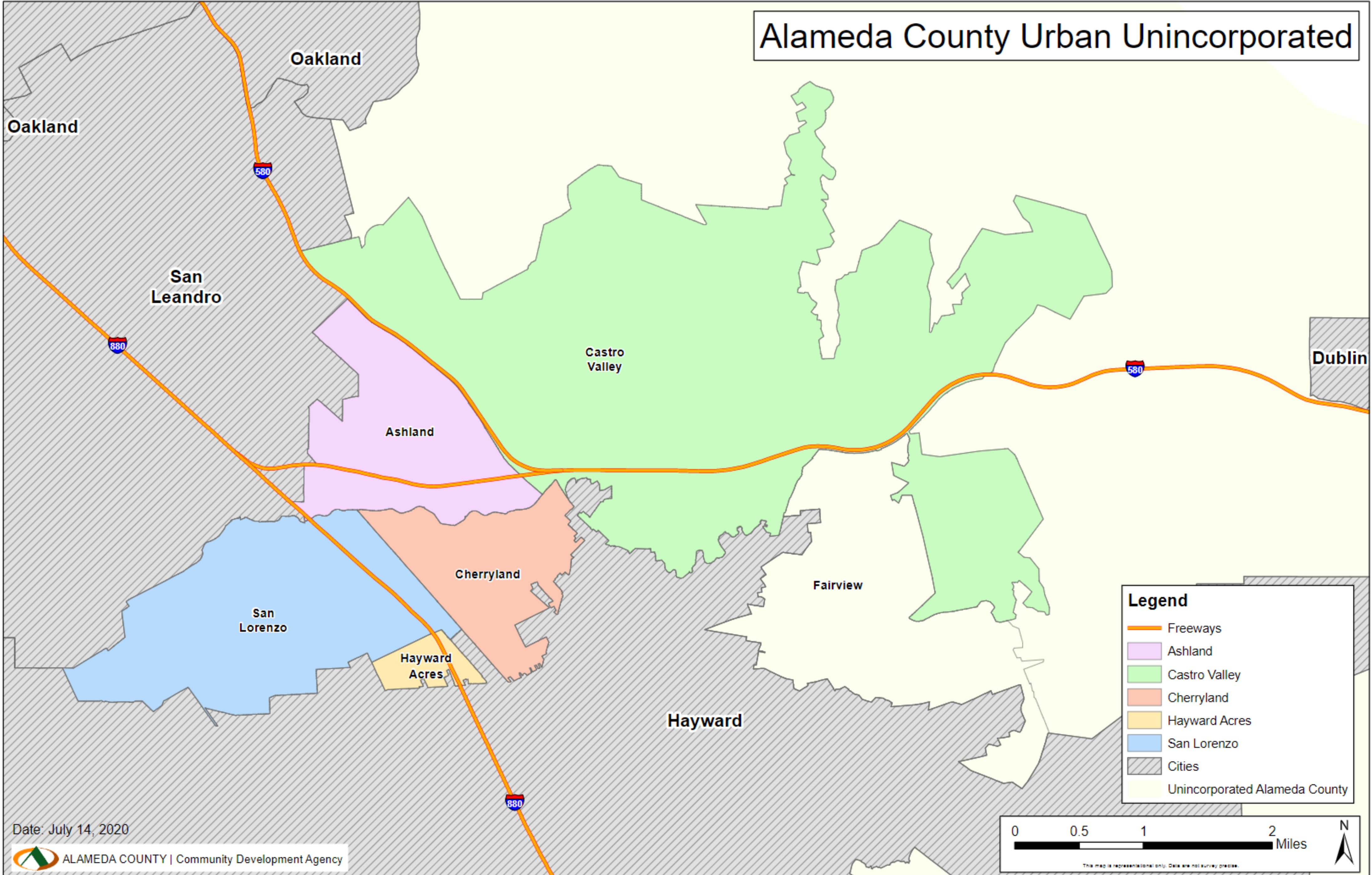


Does your ZIP Code
define you?

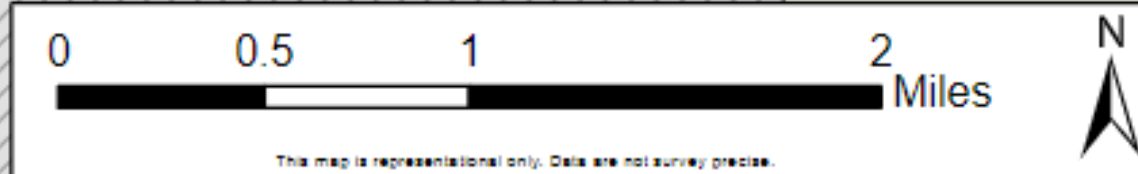
Is a ZIP Code your
neighborhood or town?



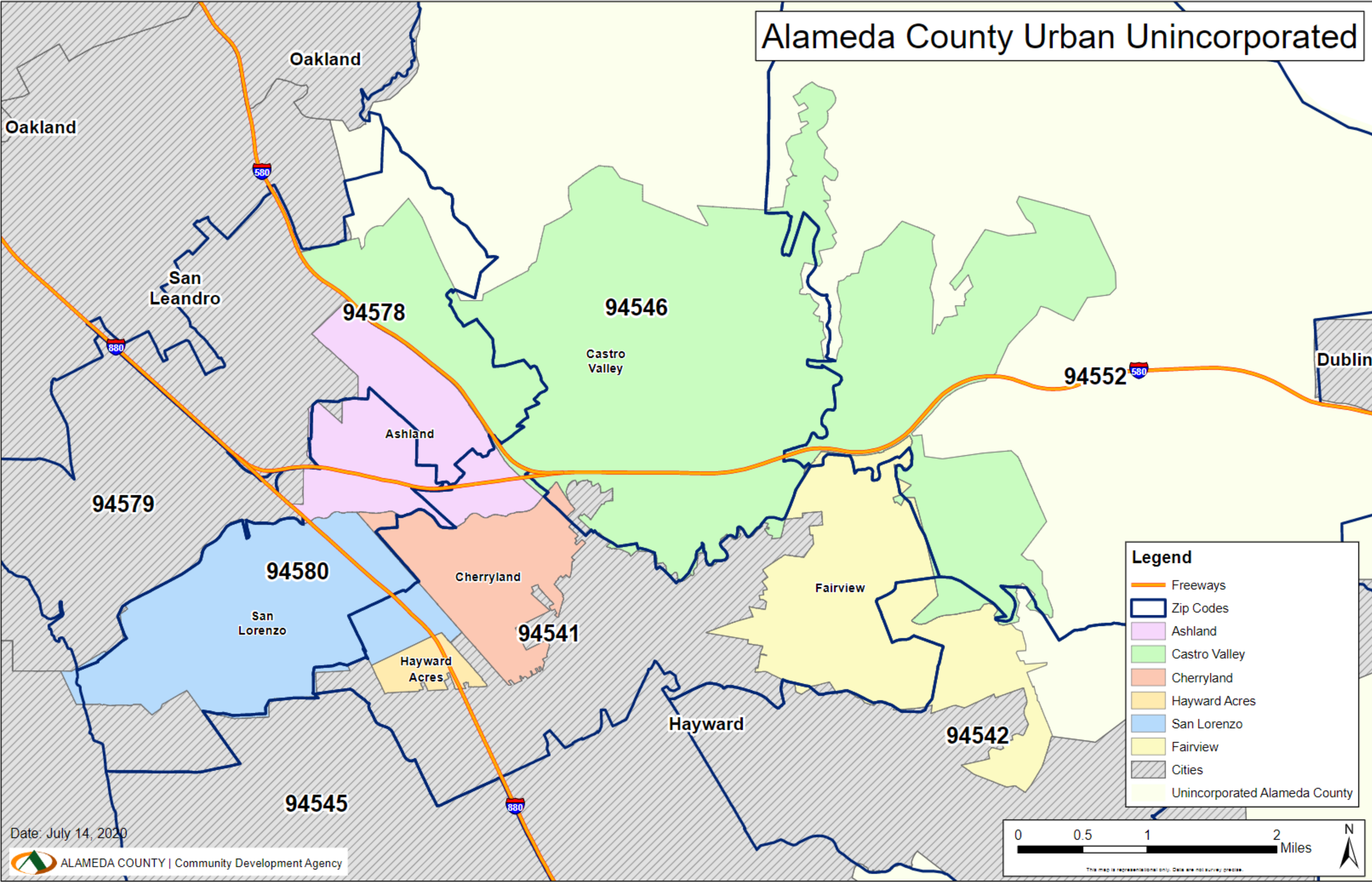
Alameda County Urban Unincorporated



Date: July 14, 2020



Alameda County Urban Unincorporated

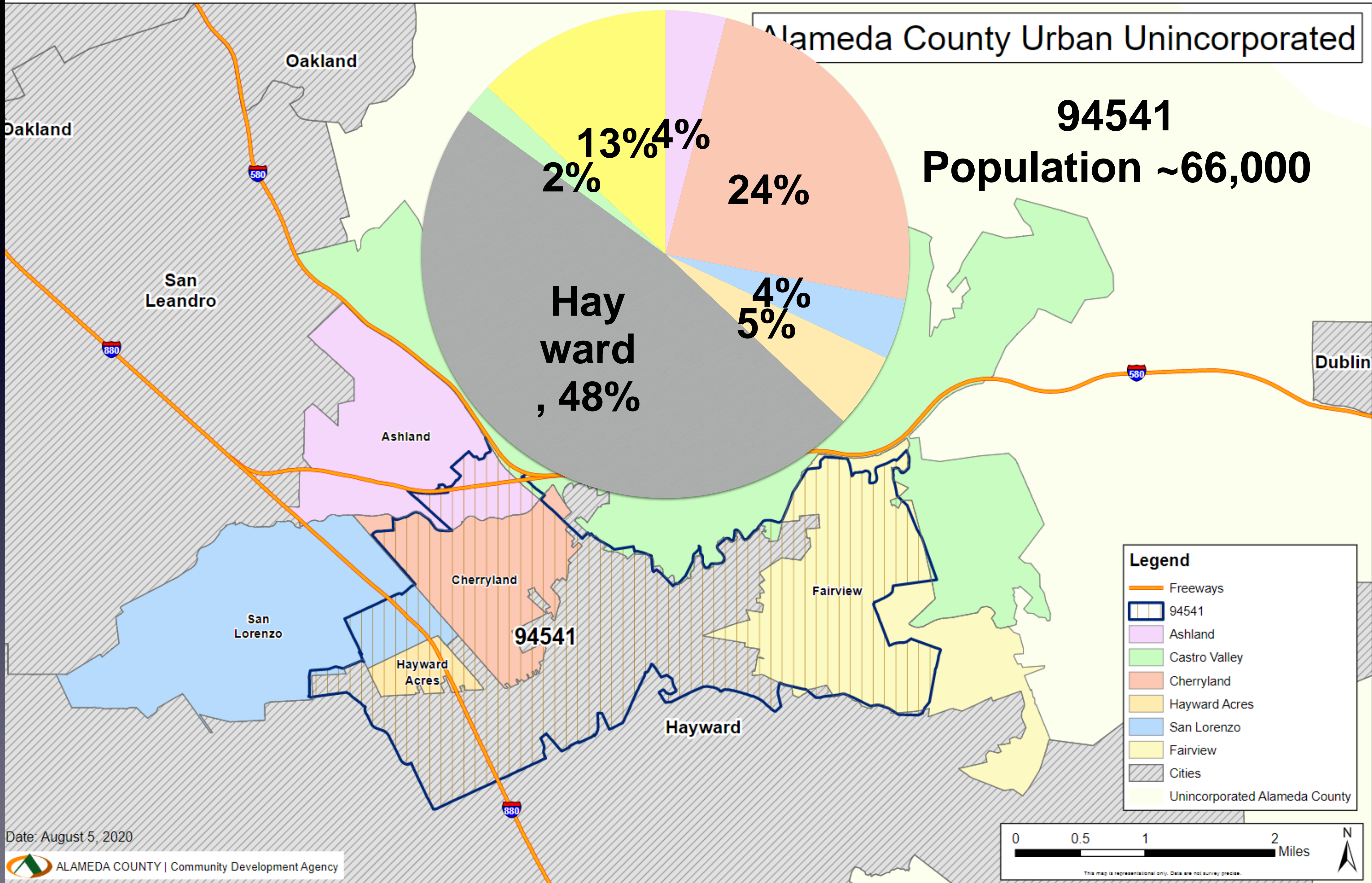
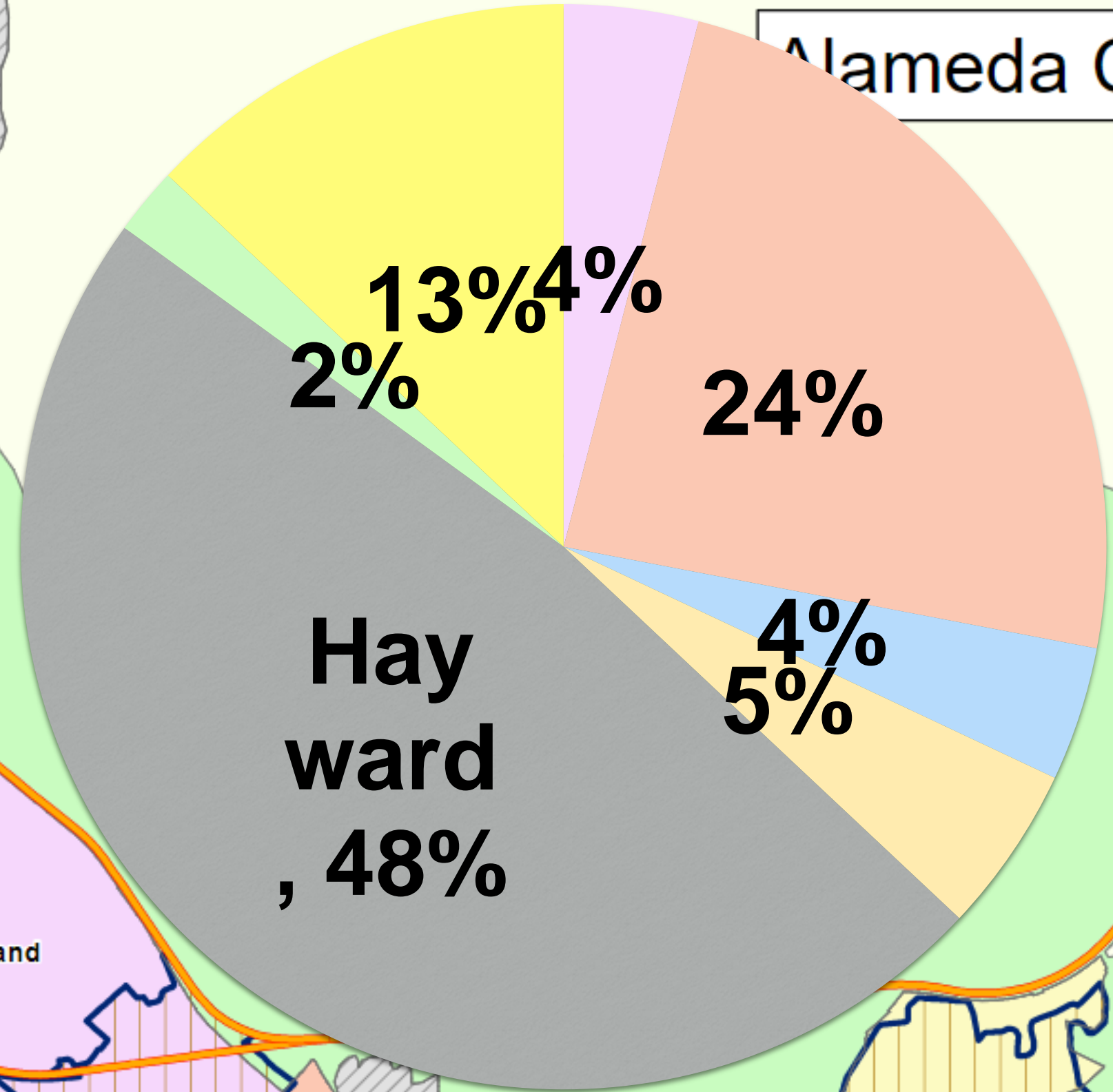


Alameda County Urban Unincorporated

94541

Population ~66,000

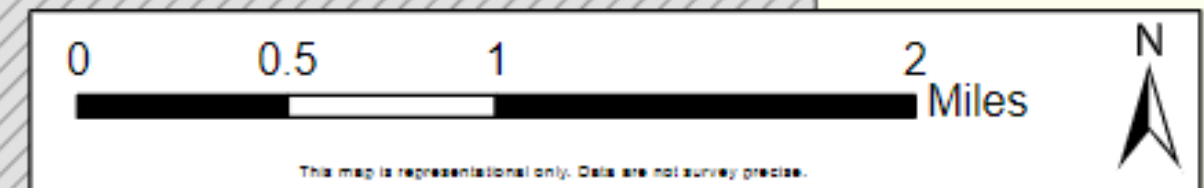
Hayward, 48%



Legend

- Freeways
- 94541
- Ashland
- Castro Valley
- Cherryland
- Hayward Acres
- San Lorenzo
- Fairview
- Cities
- Unincorporated Alameda County

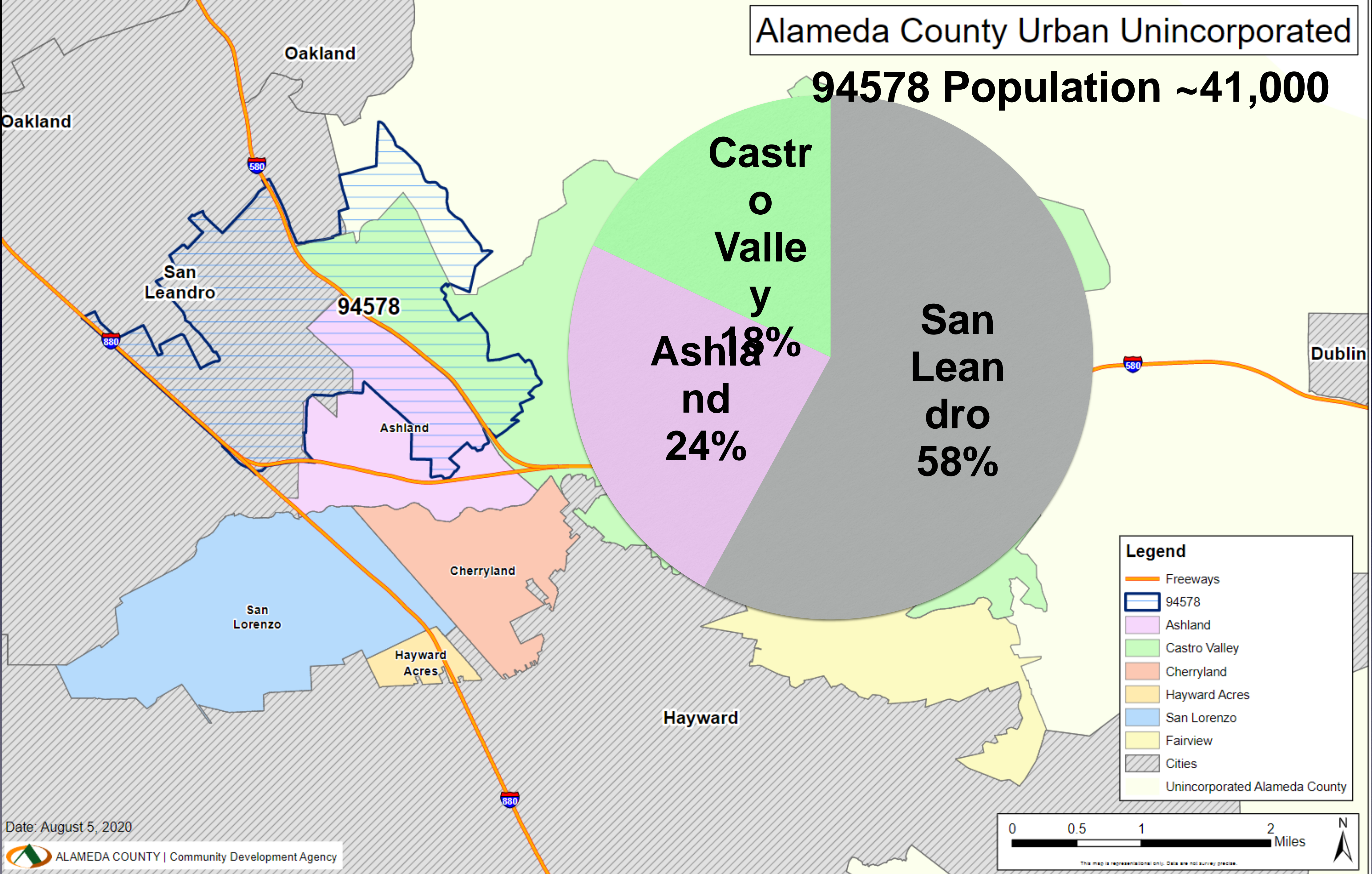
Date: August 5, 2020



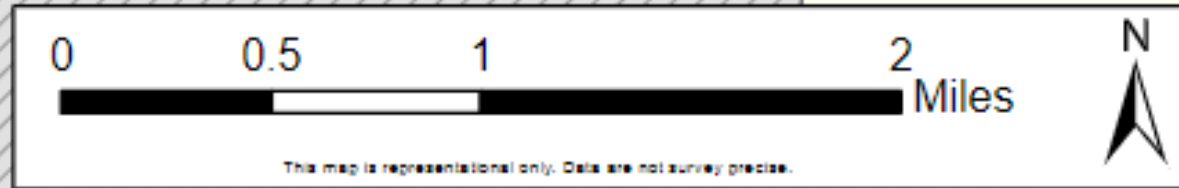
This map is representational only. Data are not survey precise.

Alameda County Urban Unincorporated

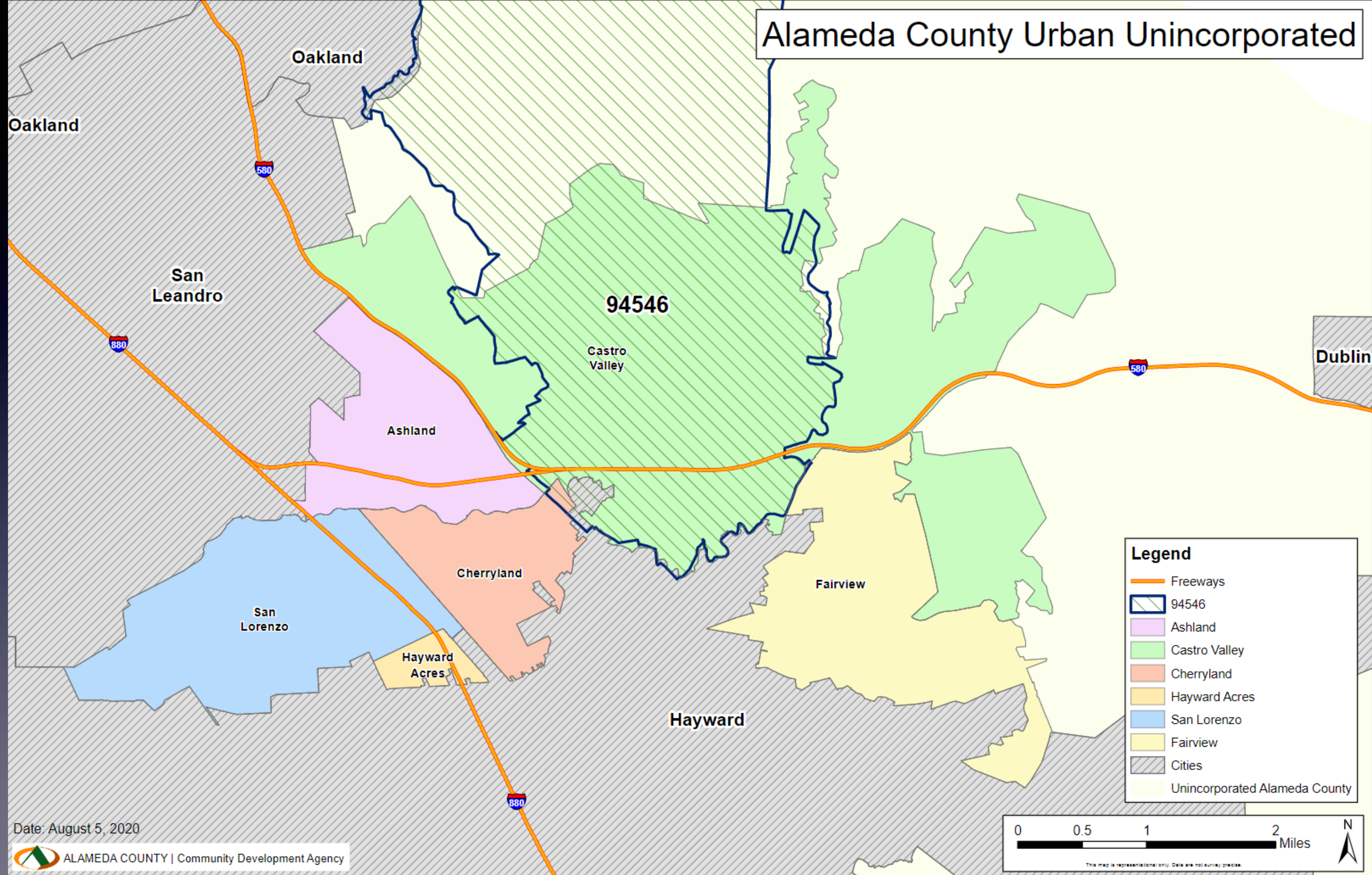
94578 Population ~41,000



Date: August 5, 2020



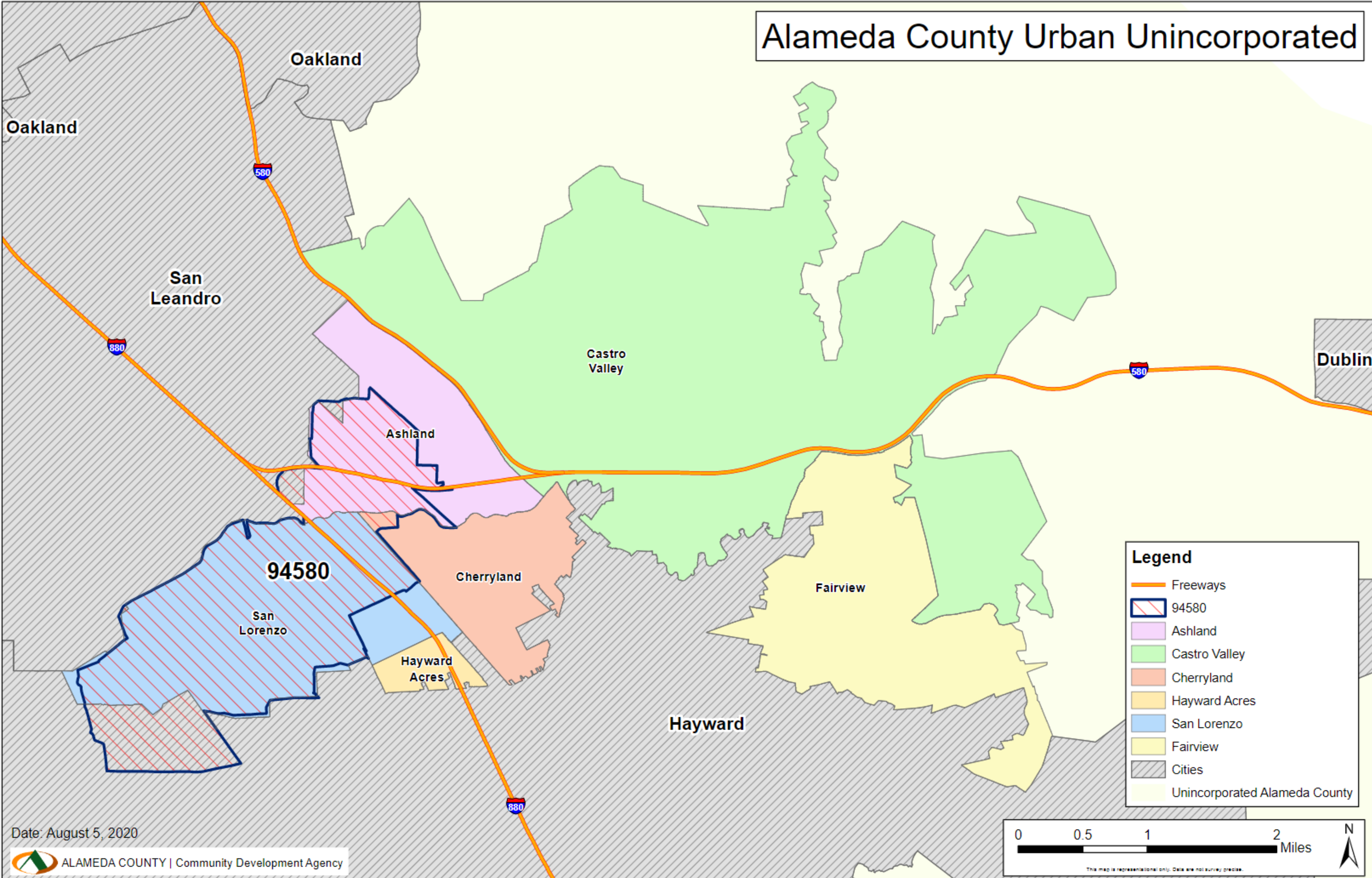
Alameda County Urban Unincorporated



Date: August 5, 2020



Alameda County Urban Unincorporated

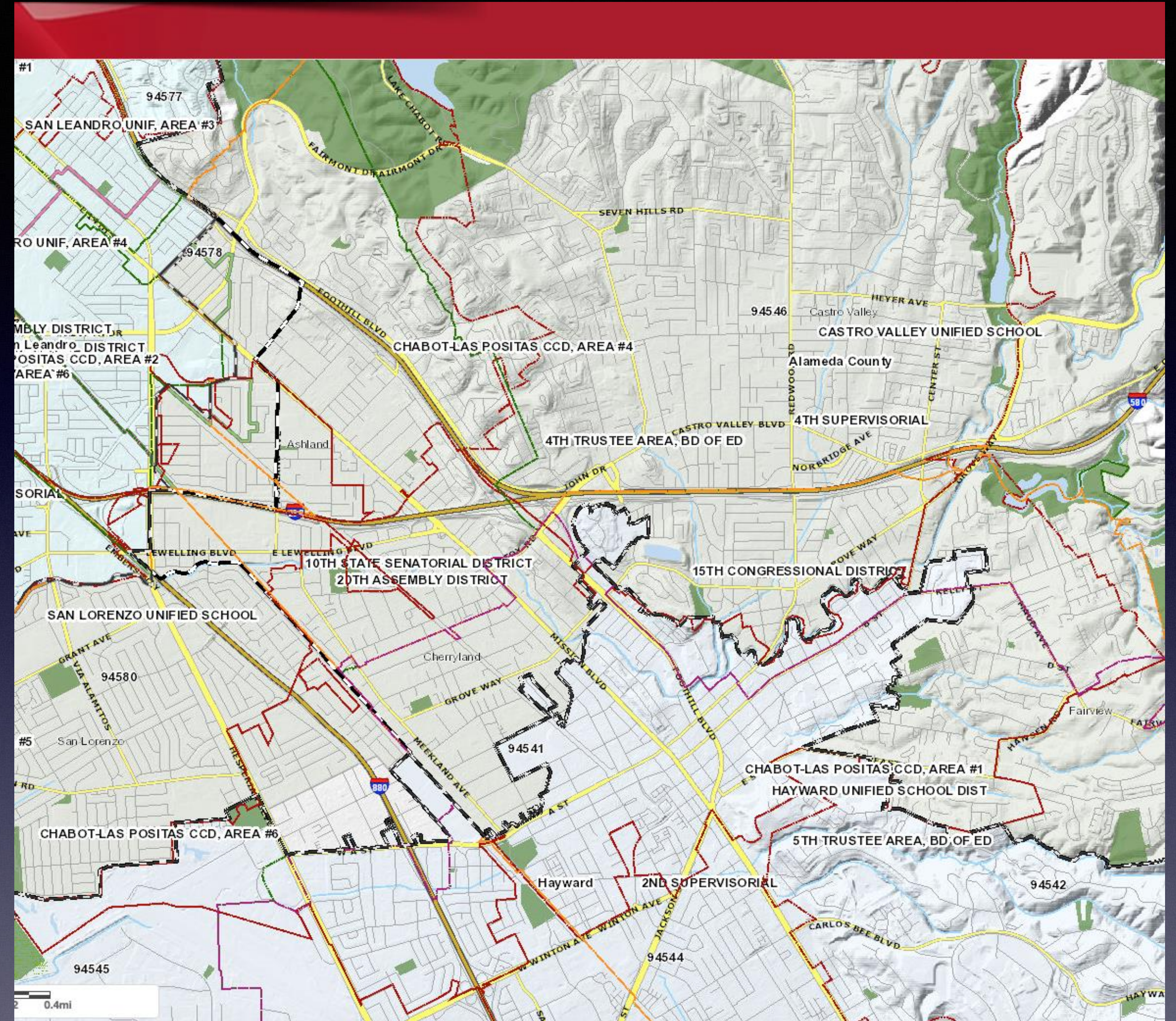


Date: August 5, 2020



Why does it matter?

Poor alignment hurts
Access to government
& delivery of services



“I’ve been paying taxes in San Leandro since 1973!”

– **Castro Valley resident of 94578**

“I had to fight the DMV to be able to vote in Hayward. Motor Voter registered me by my ZIP Code.”

– Hayward resident of 94546

Life and Death Consequences

Life Expectancy

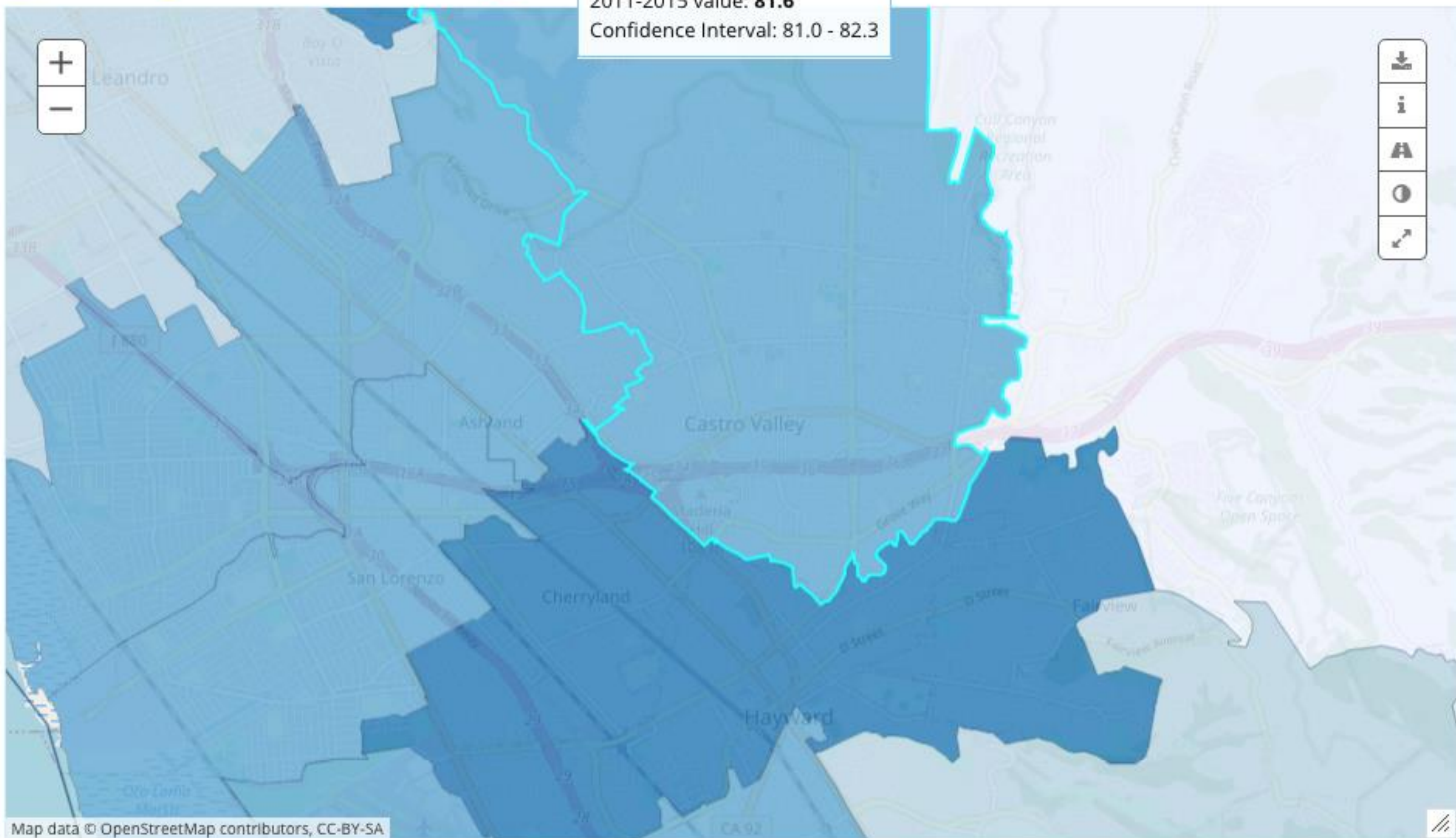
Select a Zip Code ▼

COUNTY CITIES/PLACES **ZIP CODES** CENSUS TRACTS

SELECT A COMPARISON

Grouped Alameda County Zip Codes Alameda County

Zip Code: 94546
2011-2015 value: **81.6**
Confidence Interval: 81.0 - 82.3



74.3 - 74.9



74.9 - 78.8



78.8 - 81.6



81.6 - 84.2



84.2 - 88.5



N/A

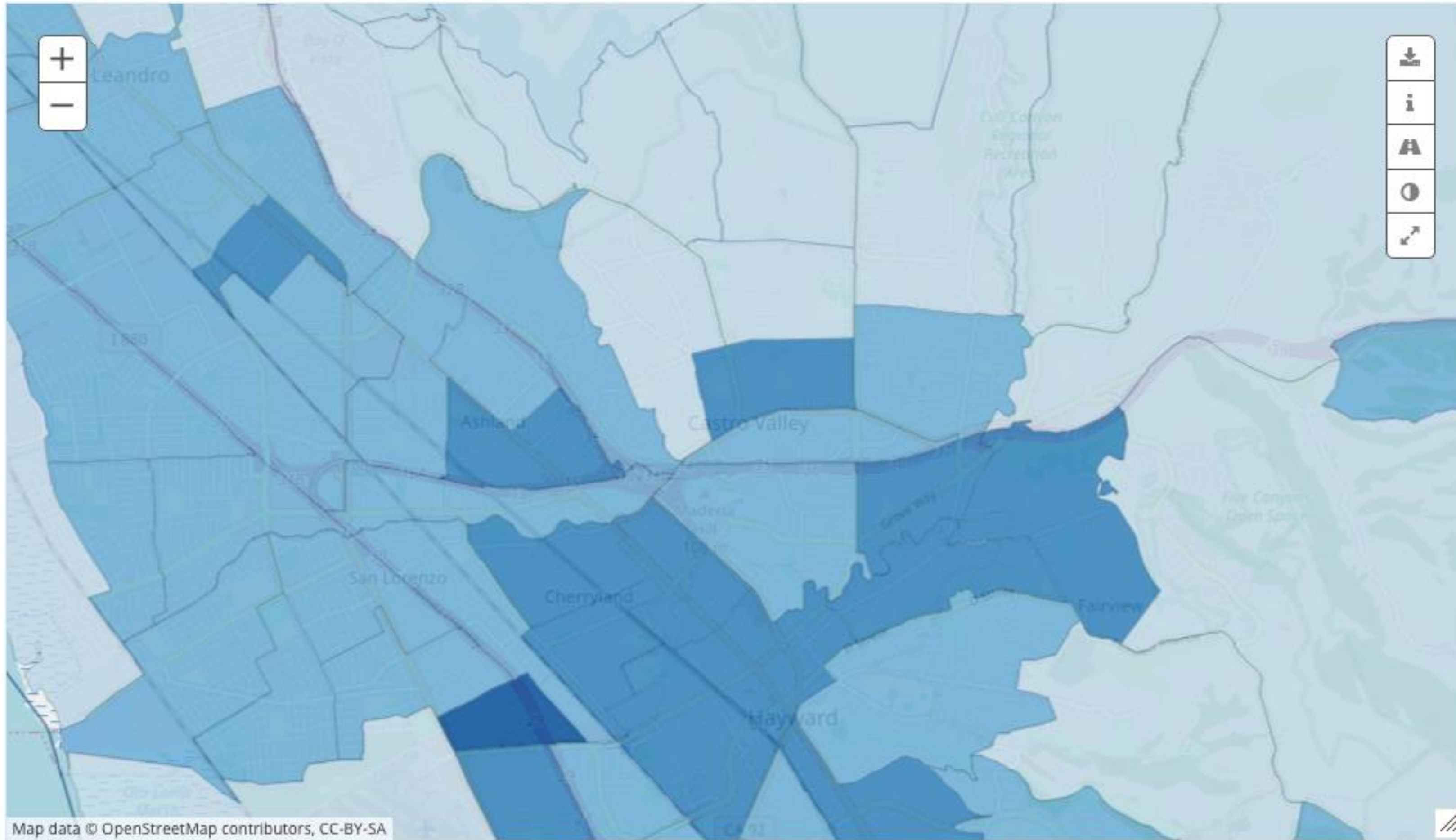
years

death rates. Although the overall U.S. average life expectancy at birth has been steadily increasing, there are differences in life expectancy between racial and ethnic groups. In addition, great variations in life expectancy exist worldwide. These variations are mostly caused by differences in public health infrastructure, distribution of wealth, medical care, and diet.

COUNTY CITIES/PLACES ZIP CODES **CENSUS TRACTS**

SELECT A COMPARISON

Grouped Alameda County Census Tracts Alameda, CA County Value



Map data © OpenStreetMap contributors, CC-BY-SA

67.7 - 74.6

74.6 - 78.8

78.8 - 82.7

82.7 - 86.6

86.6 - 95.6

N/A

Invisibility

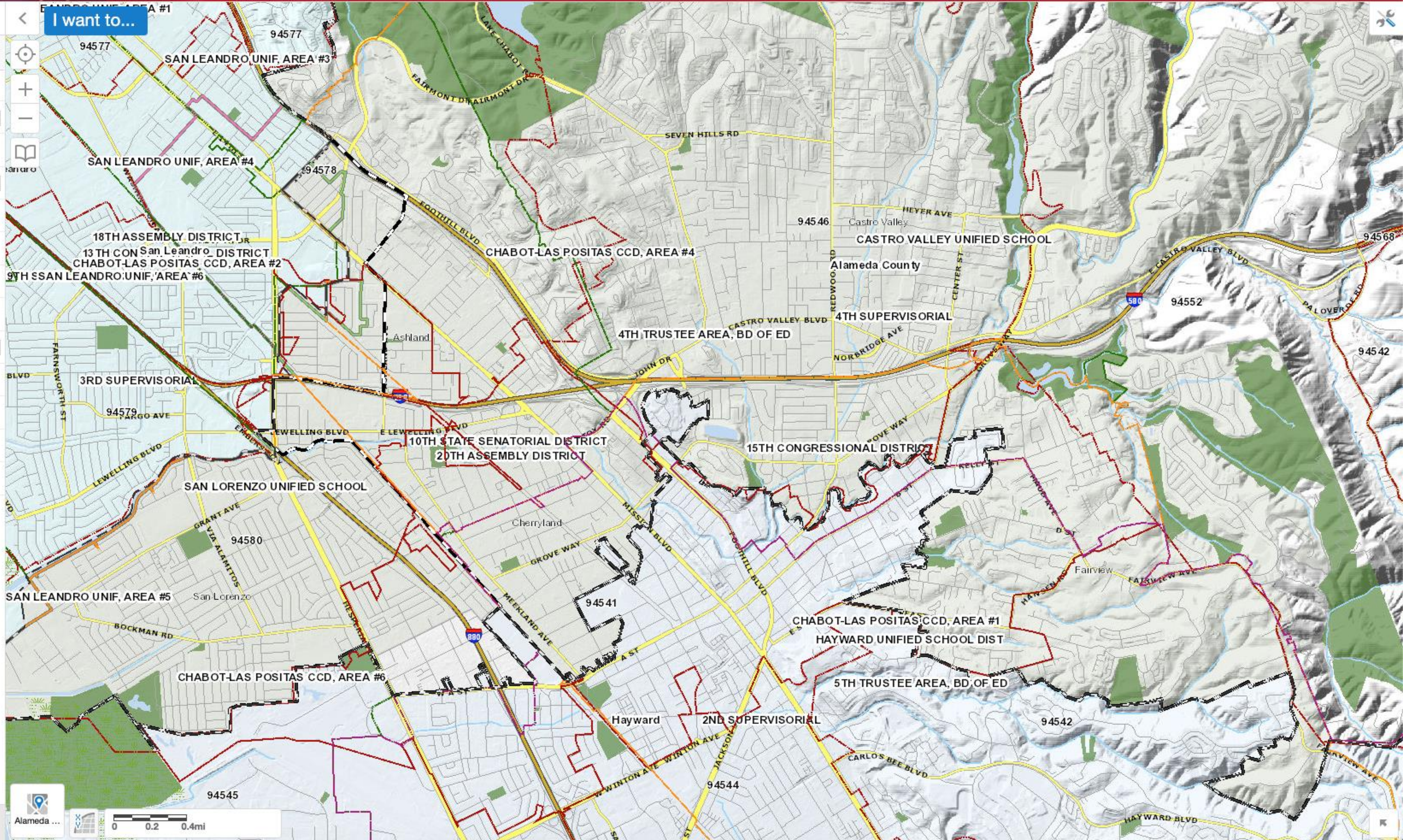
- Delivery of government service depends on understanding needs
- Access to government depends on community self-awareness
- You cannot petition the government for better conditions if you don't know where you are or who serves you.



Layers ☰ ×

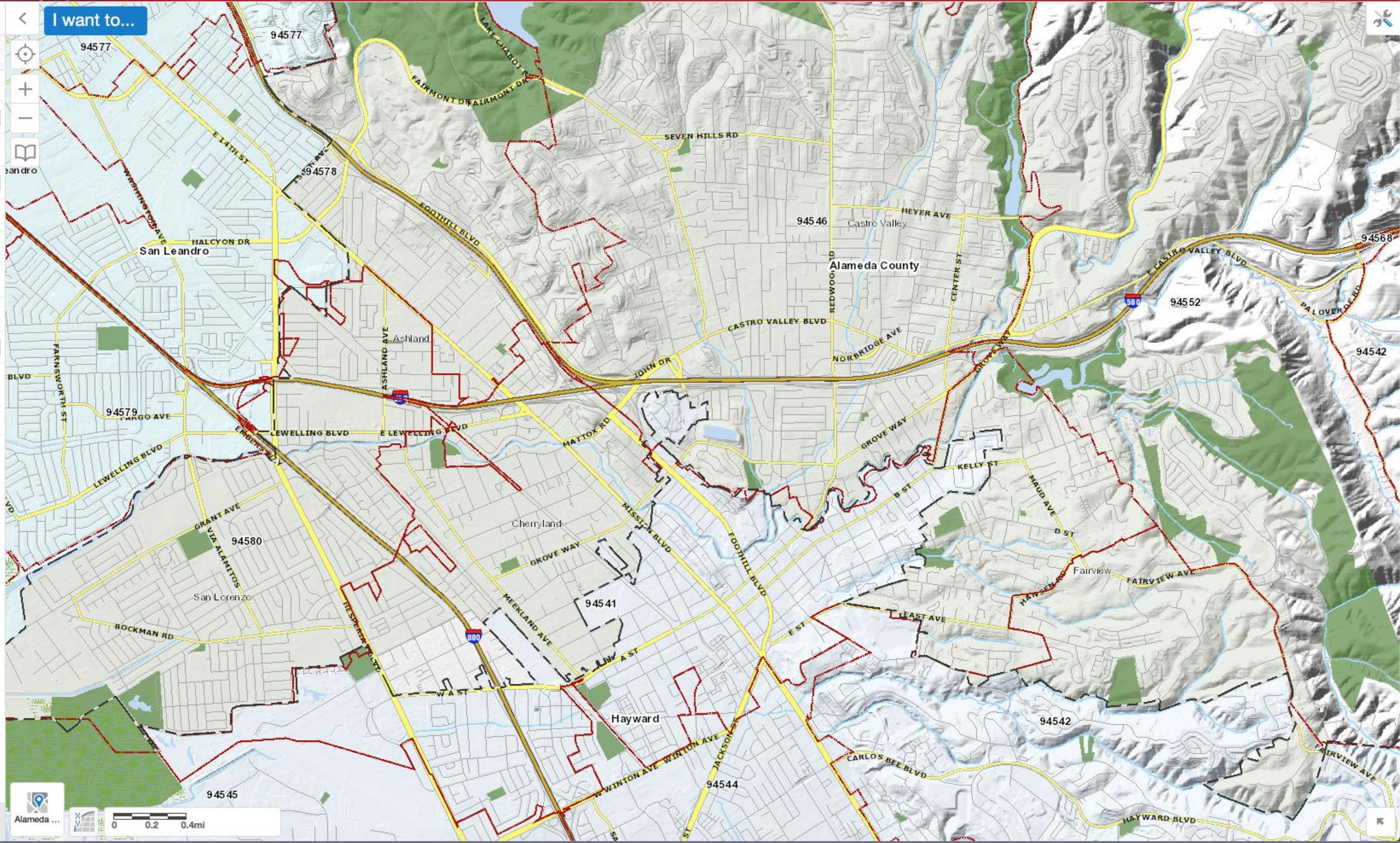
All Available Layers ▾

- Operational Layers**
- Points of Interest
- Parcels
- Administrative Boundaries**
- Census Tract
- City Boundaries
- Zip Code
- Education**
- Political Boundaries**
- Board Of Supervisors
- US Congressional
- State Senatorial
- State Assembly





- Layers
- All Available Layers
- Operational Layers
 - Points of Interest
 - Parcels
 - Administrative Boundaries
 - Census Tract
 - City Boundaries
 - Zip Code
 - Education
 - Political Boundaries



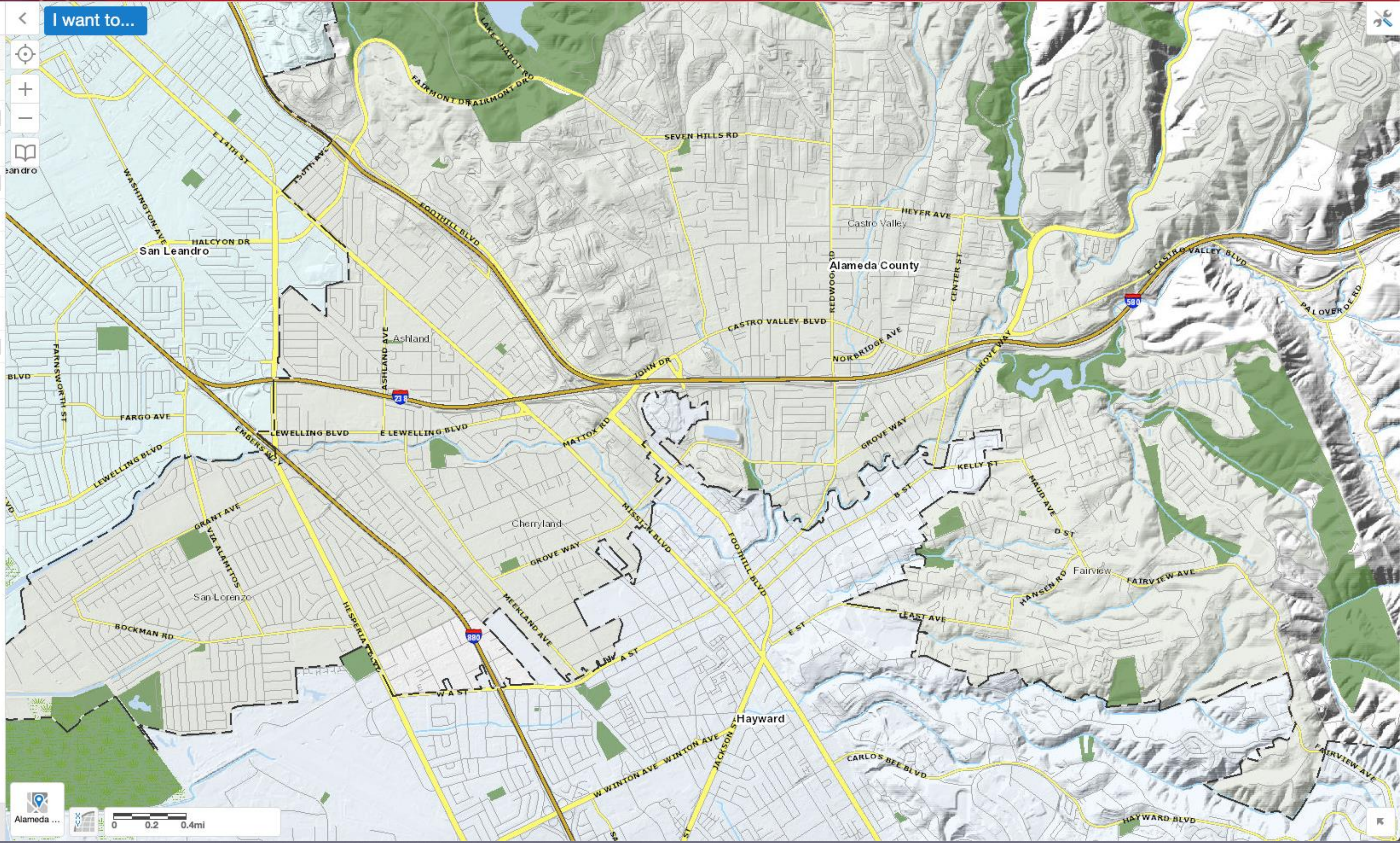


Layers ☰ ✕

◀ I want to...

All Available Layers ▼

- Operational Layers**
- Points of Interest
- Parcels
- Administrative Boundaries**
- Census Tract
- City Boundaries**
- Zip Code
- Education
- Political Boundaries



ZIP Code Realignment

- Many impacts on residents and businesses
- Some will be unforeseen
- There will be better data & access to, and delivery of services

Realignment Application

Who can do it?

Alameda County

City of Hayward

City of San Leandro

Why a file a joint application?

If we fail we can't try again until 2031

The Process

- Gather data and work with USPS to craft workable viable maps
- Build support through community organizations
- Bring informational presentations to MACs, City Councils, and the County
- Propose a draft resolution for approval by MACs, City Councils, and Alameda County Board of Supervisors
- Alameda County Board of Supervisors and Cities votes to pursue application

Opportunities to help

- **1) Technical assistance committee**
 - Spread sheets and databases
 - Mapping potential changes
- **2) Community presentation committee**
 - Spread the word at community groups and with social media
 - Attend road show meetings and speak to the issue