

EALI Governance

Thursday February 4th 2021

Why we're pursuing Zip Code Realignment

What we've been doing

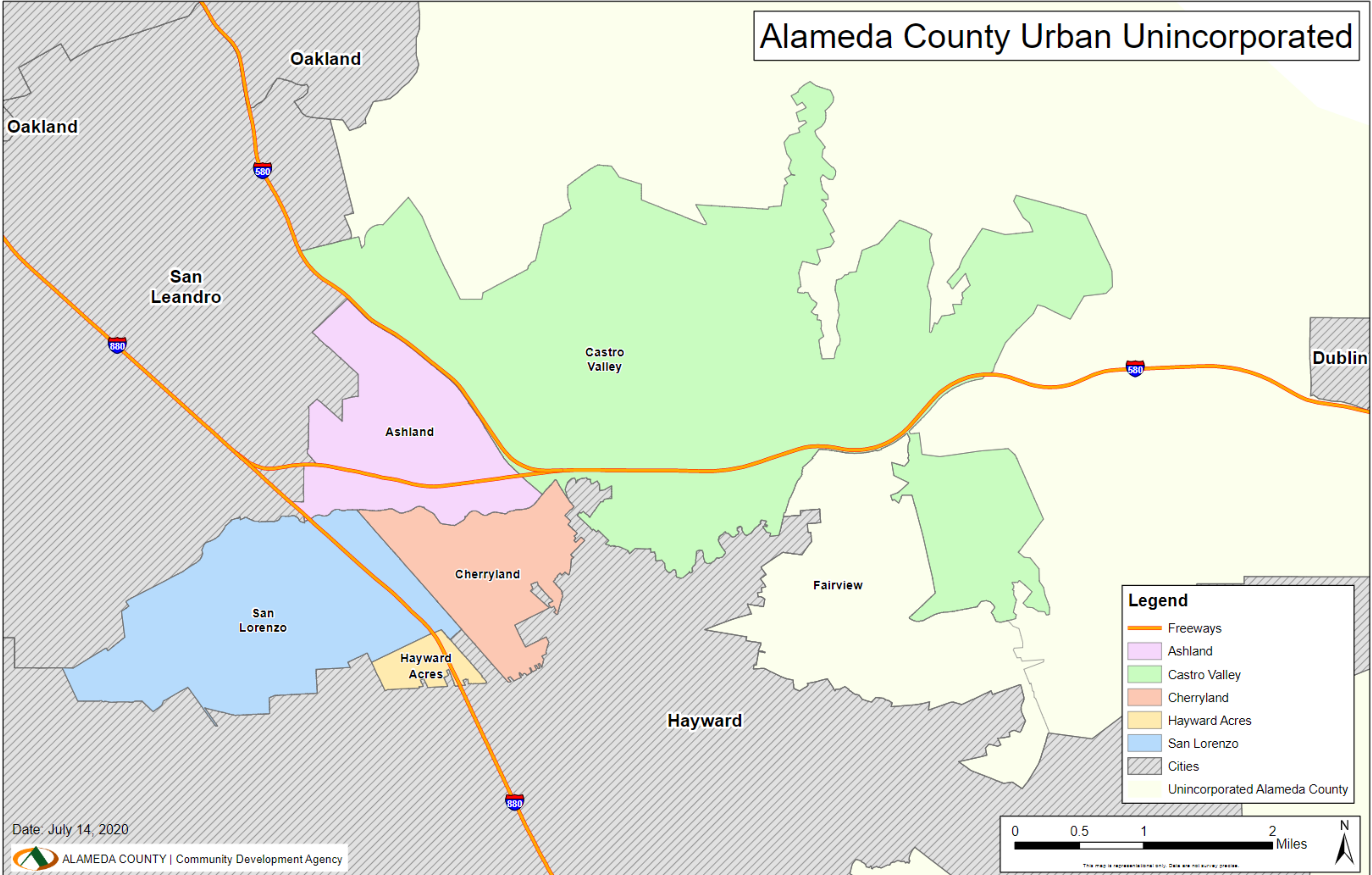
What we've learned

What's next

Why ZIP Code Realignment?

Recap of the problems with fragmentation

Alameda County Urban Unincorporated



Date: July 14, 2020

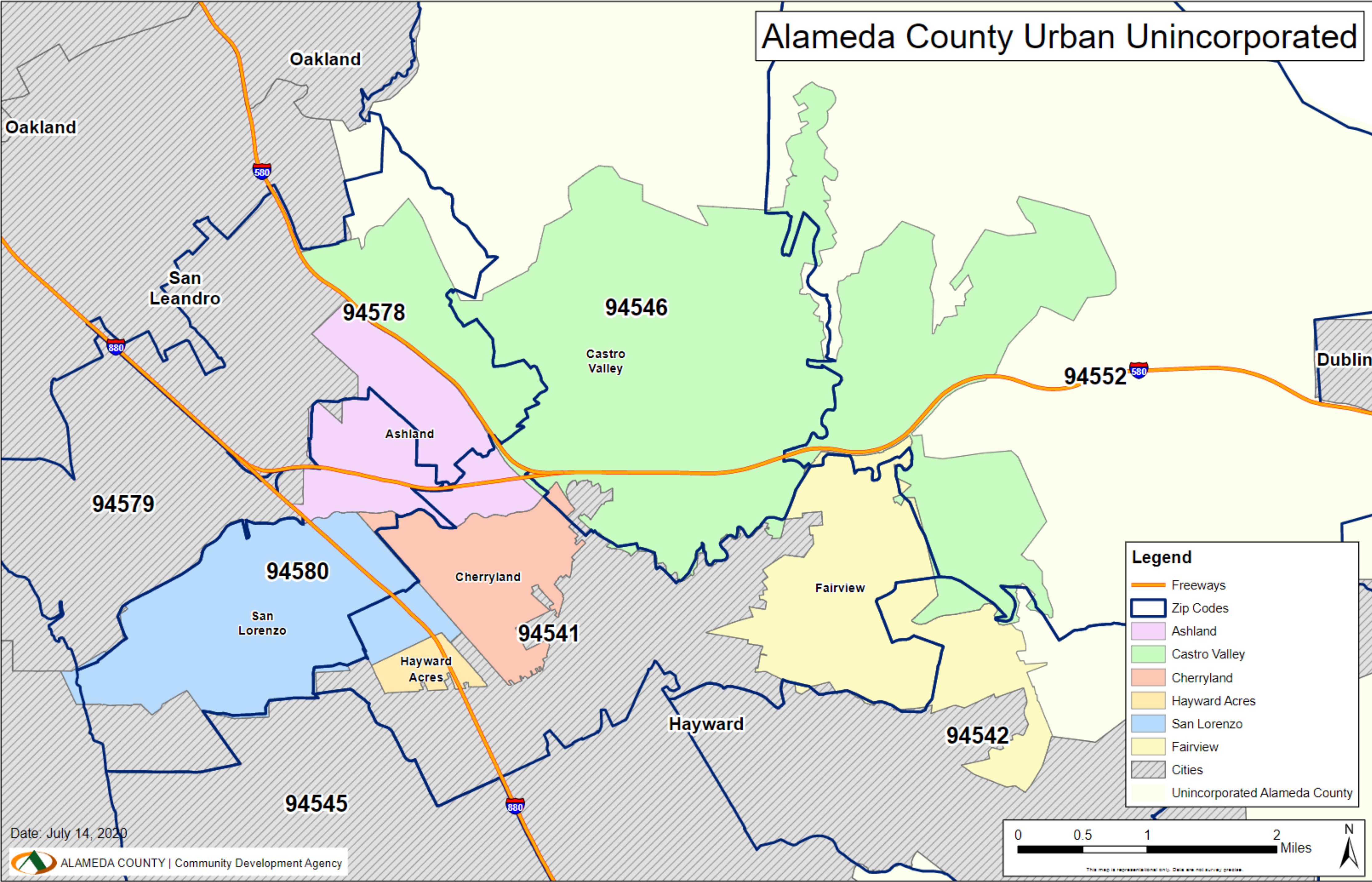
Legend

- Freeways
- Ashland
- Castro Valley
- Cherryland
- Hayward Acres
- San Lorenzo
- Cities
- Unincorporated Alameda County

0 0.5 1 2 Miles

This map is representational only. Data are not survey precise.

Alameda County Urban Unincorporated

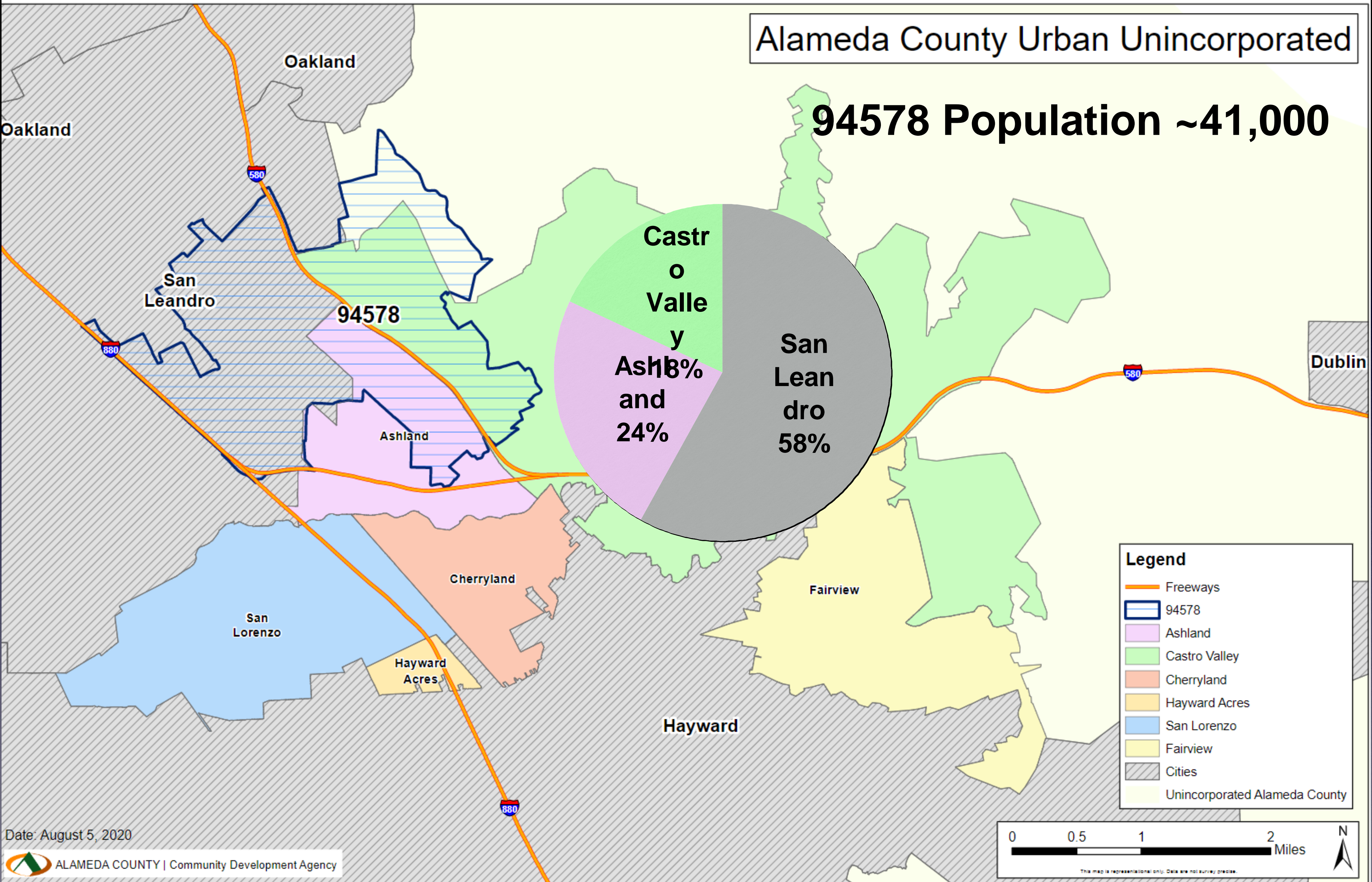


Date: July 14, 2020

The map is representational only. Data are not survey grade.

Alameda County Urban Unincorporated

94578 Population ~41,000



Legend

- Freeways
- 94578
- Ashland
- Castro Valley
- Cherryland
- Hayward Acres
- San Lorenzo
- Fairview
- Cities
- Unincorporated Alameda County

Date: August 5, 2020

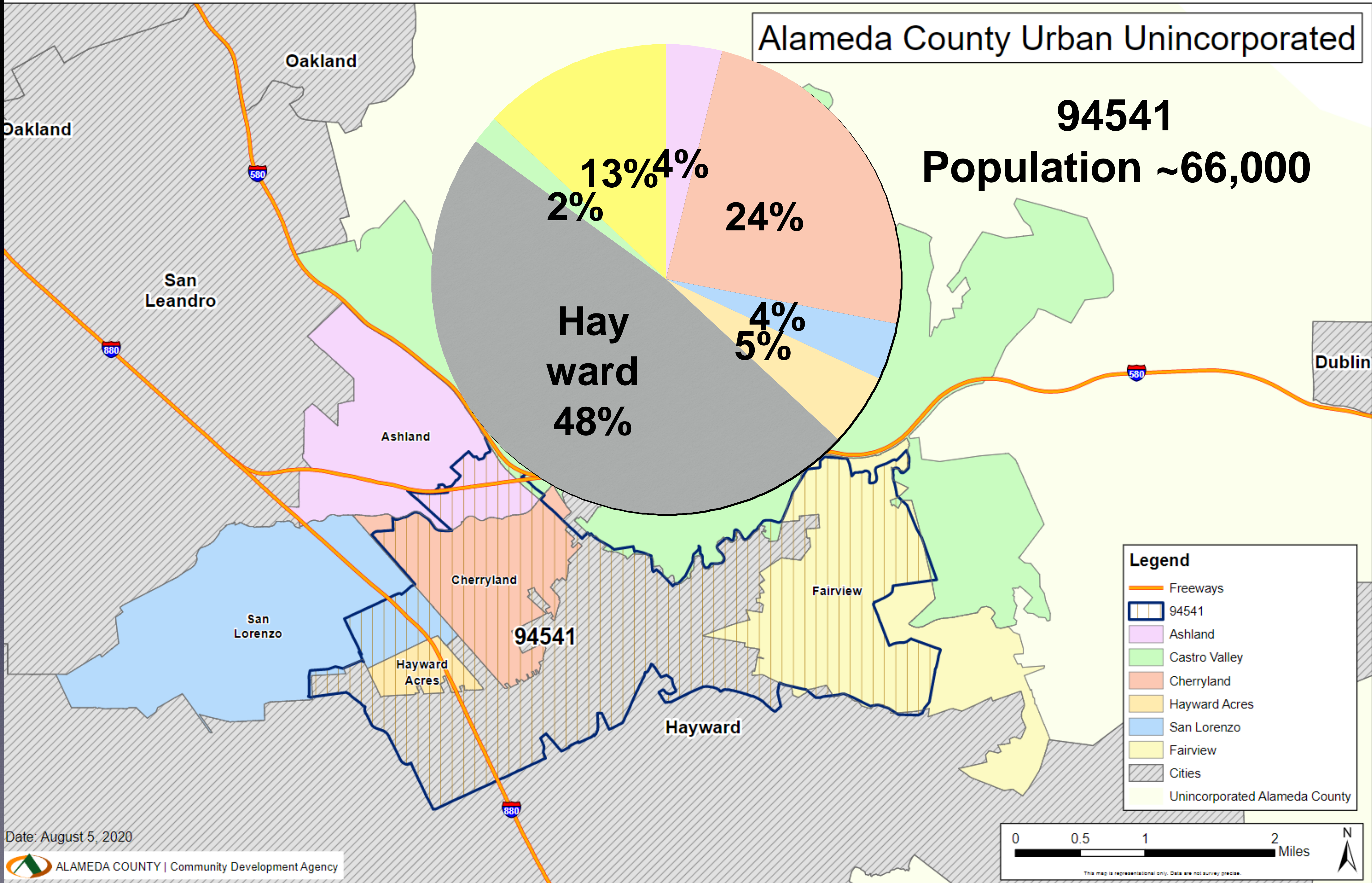
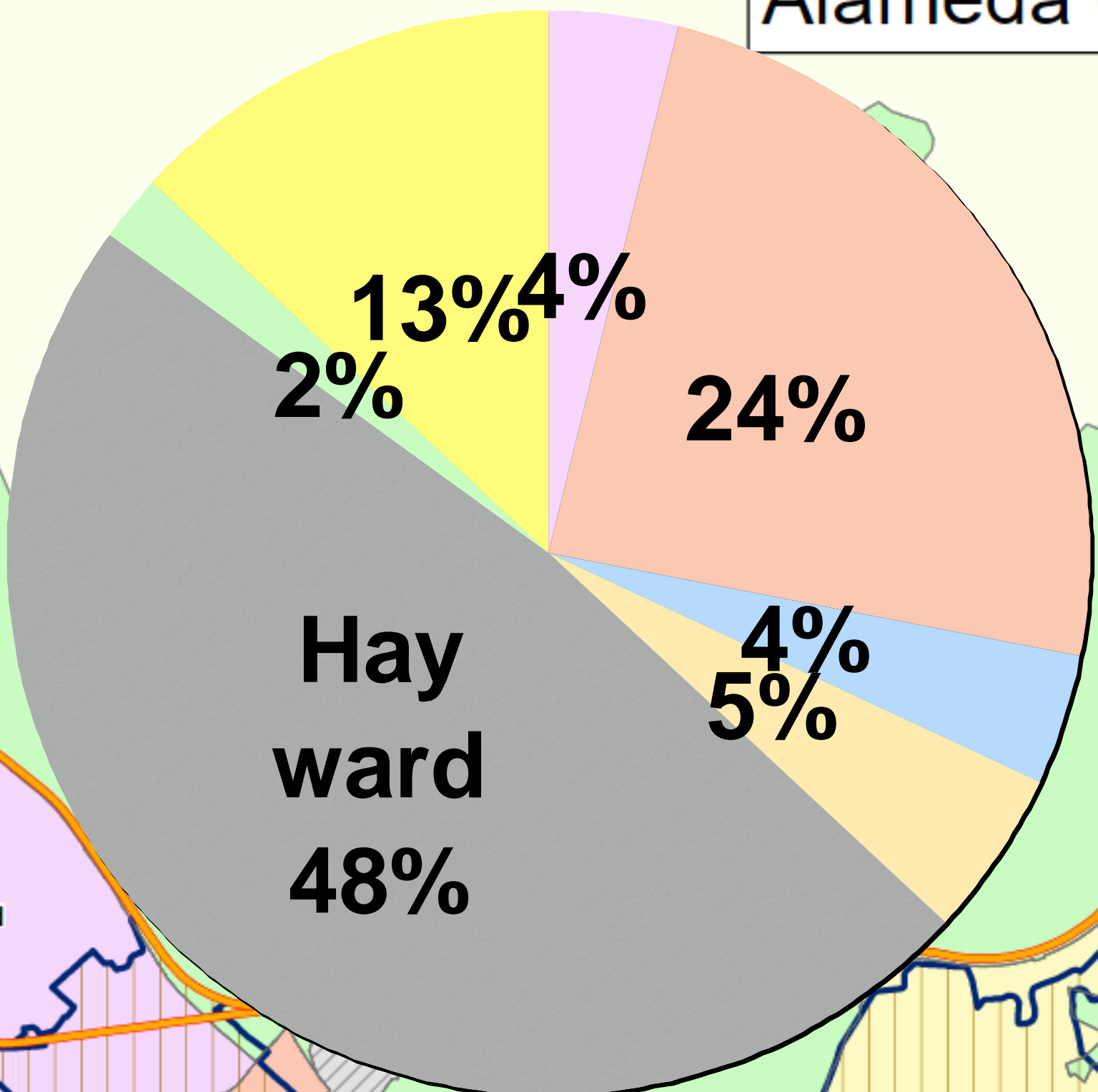
0 0.5 1 2 Miles

This map is representational only. Data are not survey precise.

Alameda County Urban Unincorporated

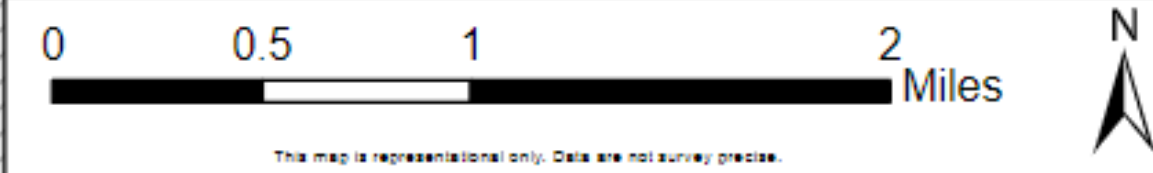
94541

Population ~66,000



Legend

- Freeways
- 94541
- Ashland
- Castro Valley
- Cherryland
- Hayward Acres
- San Lorenzo
- Fairview
- Cities
- Unincorporated Alameda County

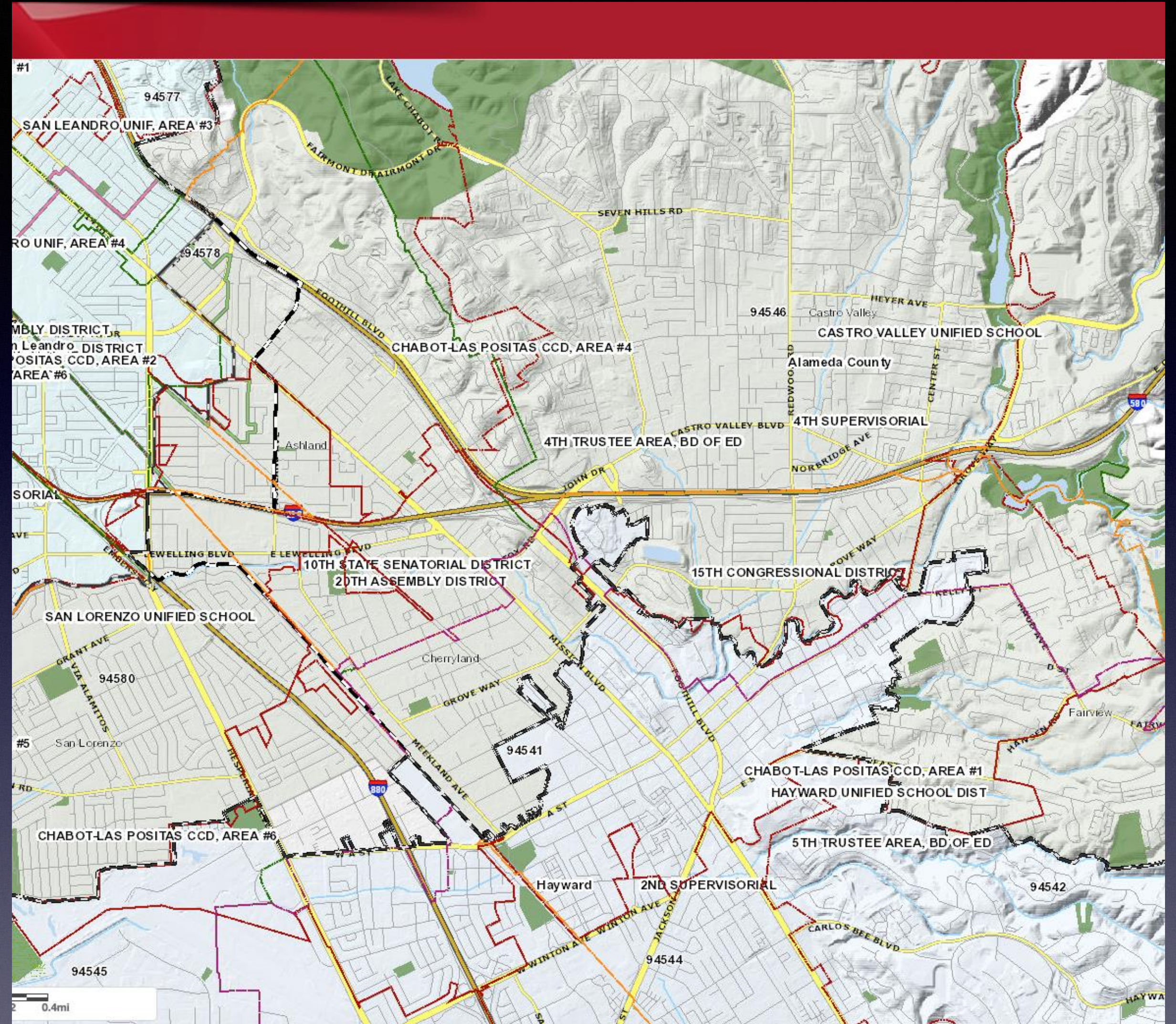


Date: August 5, 2020

This map is representational only. Data are not survey precise.

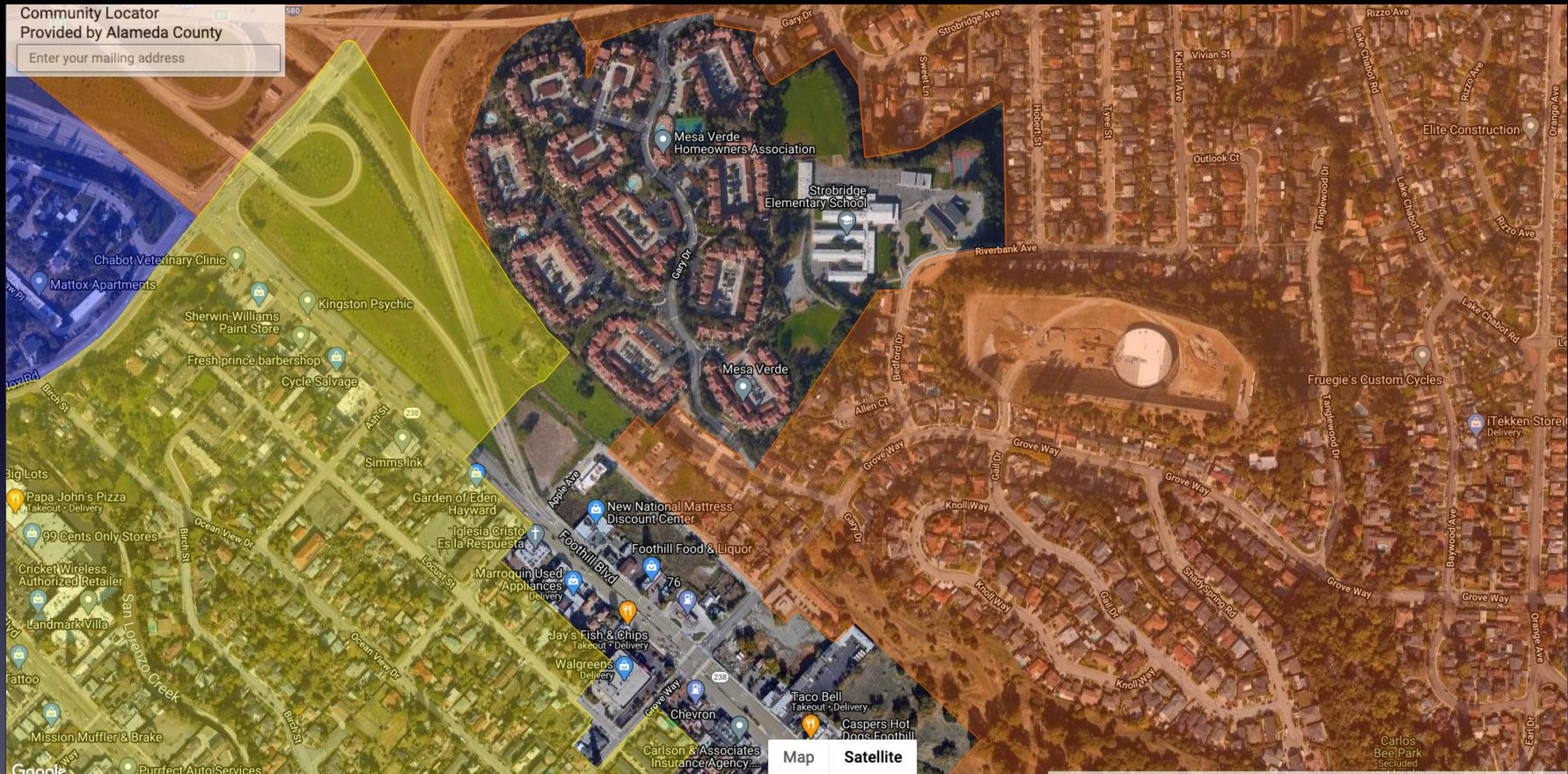
Why does it matter?

Poor alignment hurts
Access to government
& delivery of services



“I have lived and paid taxes in San Leandro since 1973!”

– **Castro Valley resident of 94578**



Even City Council members and law enforcement are sometimes unclear

“I had to fight the DMV to be able to vote in Hayward. Motor Voter registered me by my ZIP Code.”

– Hayward resident of 94546

Enter your mailing address



Invisibility

- Delivery of government service depends on understanding needs
- Access to government depends on community self-awareness
- You cannot petition the government for better conditions if you don't know where you are or who serves you.

Life and Death Consequences

Life Expectancy

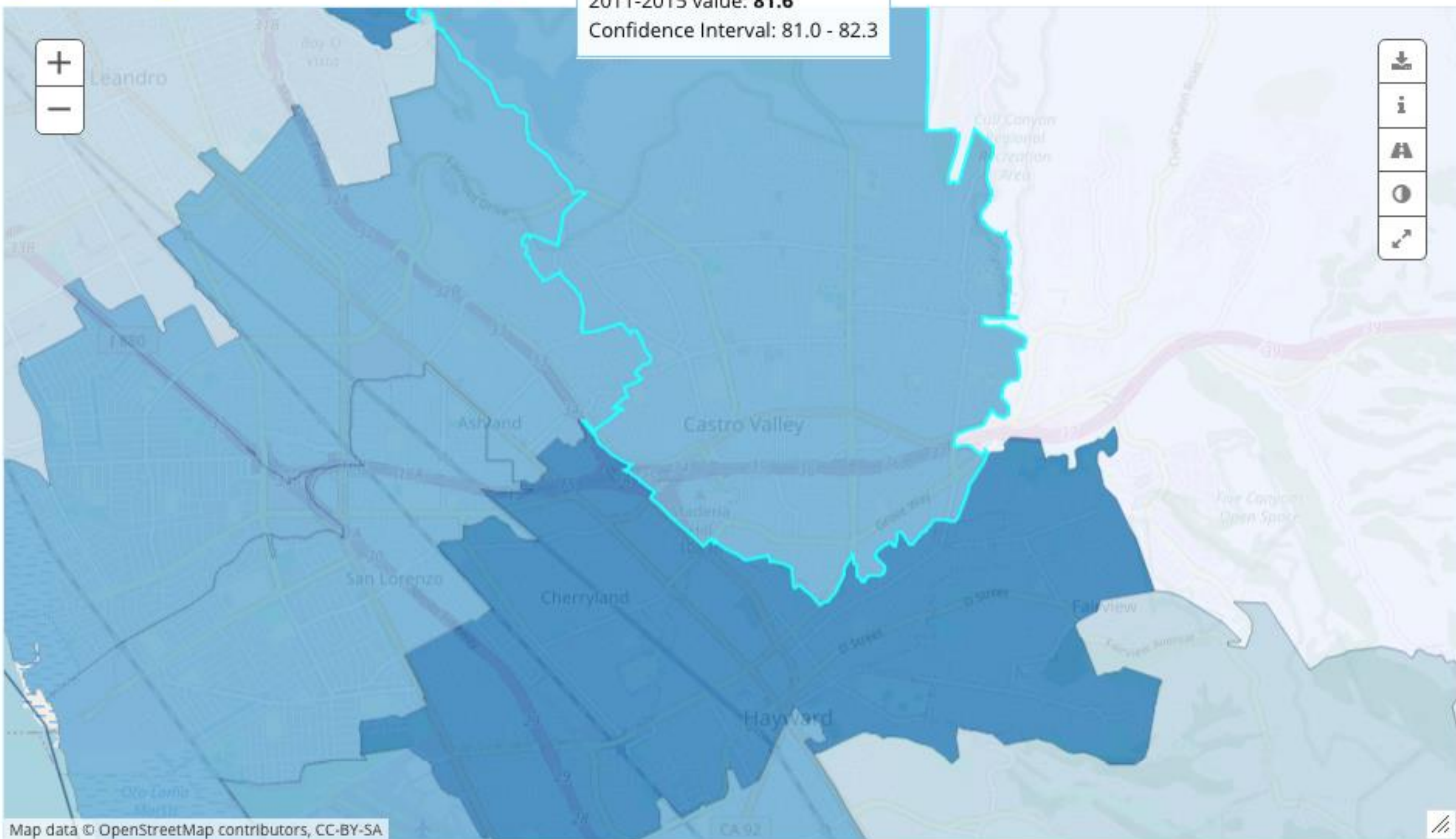
Select a Zip Code ▼

COUNTY CITIES/PLACES **ZIP CODES** CENSUS TRACTS

SELECT A COMPARISON

Grouped Alameda County Zip Codes Alameda County

Zip Code: 94546
2011-2015 value: **81.6**
Confidence Interval: 81.0 - 82.3



74.3 - 74.9



74.9 - 78.8



78.8 - 81.6



81.6 - 84.2



84.2 - 88.5



N/A

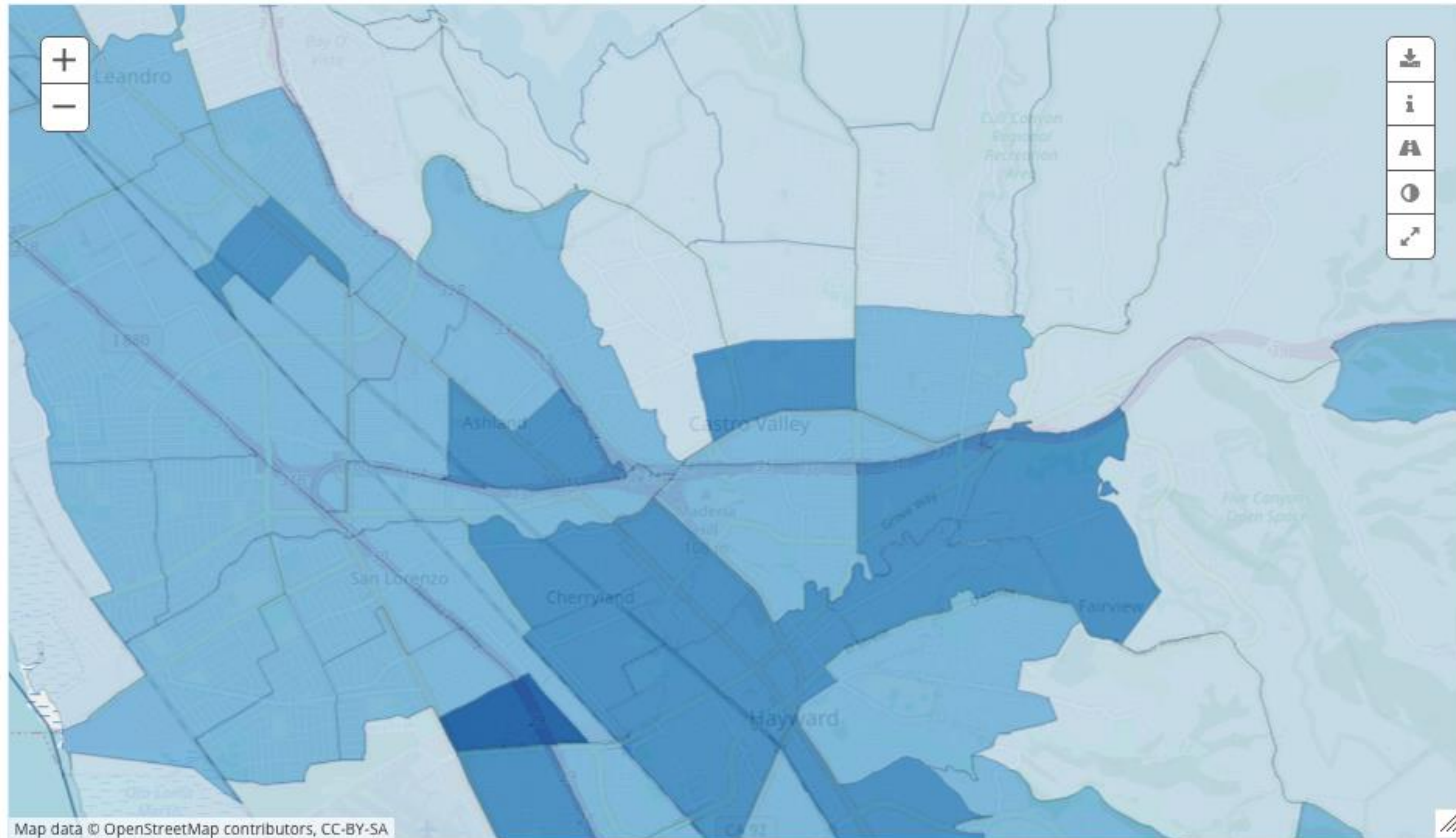
years

death rates. Although the overall U.S. average life expectancy at birth has been steadily increasing, there are differences in life expectancy between racial and ethnic groups. In addition, great variations in life expectancy exist worldwide. These variations are mostly caused by differences in public health infrastructure, distribution of wealth, medical care, and diet.

COUNTY CITIES/PLACES ZIP CODES **CENSUS TRACTS**

SELECT A COMPARISON

Grouped Alameda County Census Tracts Alameda, CA County Value



67.7 - 74.6



74.6 - 78.8



78.8 - 82.7



82.7 - 86.6



86.6 - 95.6



N/A

ZIP Code Realignment

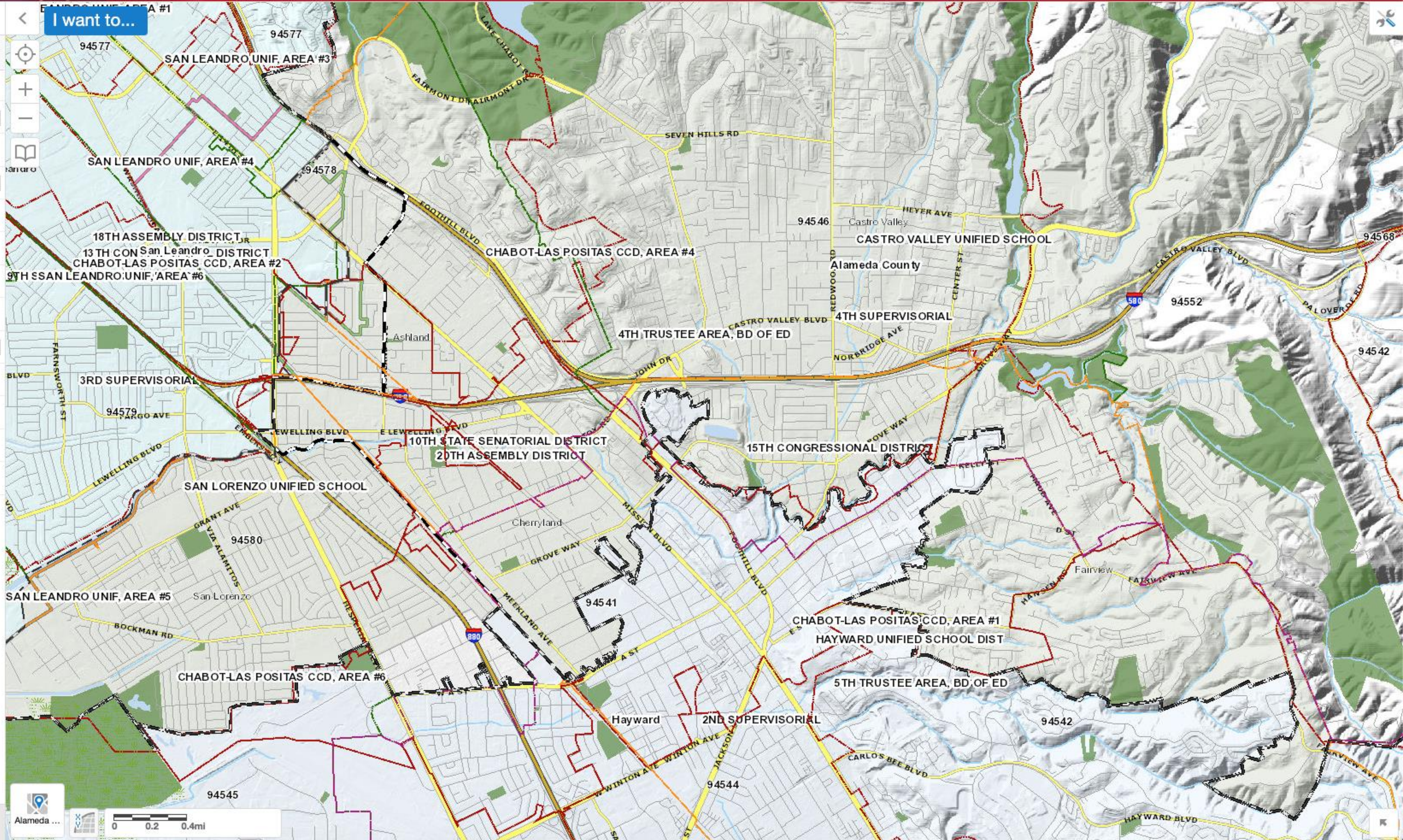
- Many impacts on residents and businesses
- Some will be unforeseen
- There will be winners and losers



Layers

All Available Layers

- Operational Layers
- Points of Interest
- Parcels
- Administrative Boundaries
 - Census Tract
 - City Boundaries
 - Zip Code
- Education
- Political Boundaries
 - Board Of Supervisors
 - US Congressional
 - State Senatorial
 - State Assembly

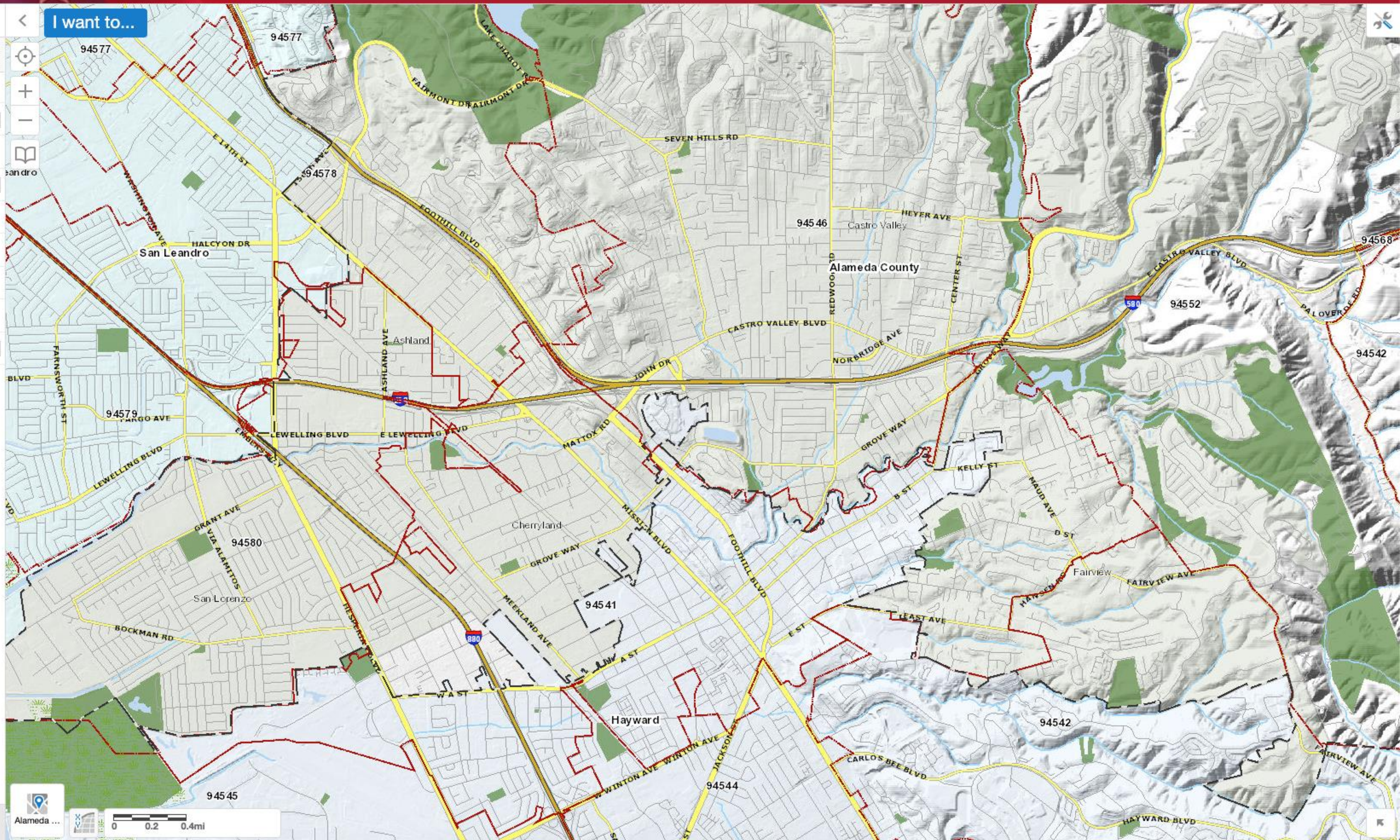




Layers ☰ ✕

I want to...

- All Available Layers ▾
- Operational Layers
 - Points of Interest
 - Parcels
 - Administrative Boundaries
 - Census Tract
 - City Boundaries
 - Zip Code
 - Education
 - Political Boundaries



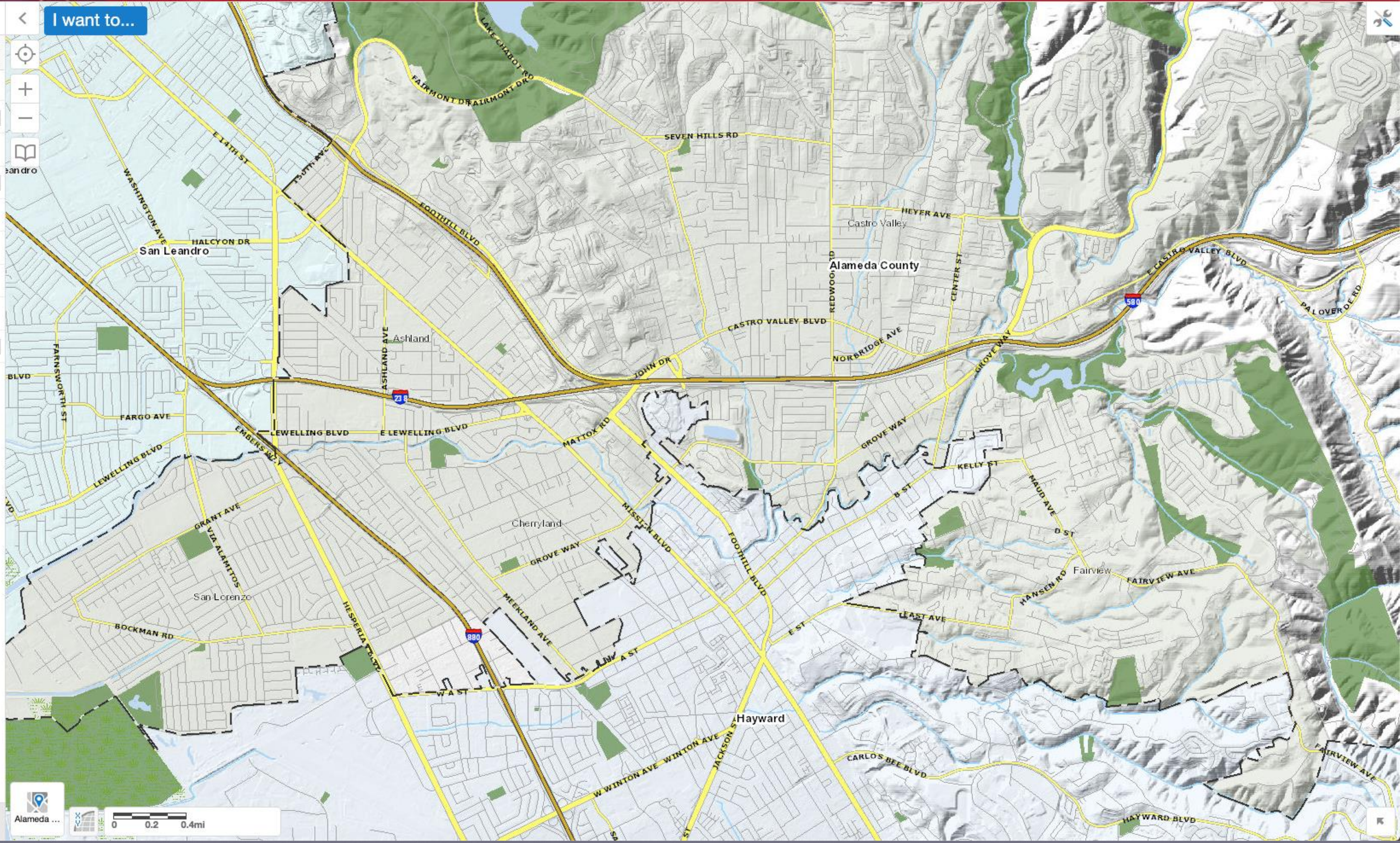


Layers ☰ ✕

◀ I want to...

All Available Layers ▾

- Operational Layers**
- Points of Interest
- Parcels
- Administrative Boundaries**
- Census Tract
- City Boundaries**
- Zip Code
- Education
- Political Boundaries



Realignment Application

Who can do it?

- Alameda County
- City of Hayward
- City of San Leandro

Meeting with Hayward

Their reaction

What we learned

Change of tactics

Contact with the USPS

- Their reaction
- What we learned
- Change of tactics

How to approach San Leandro

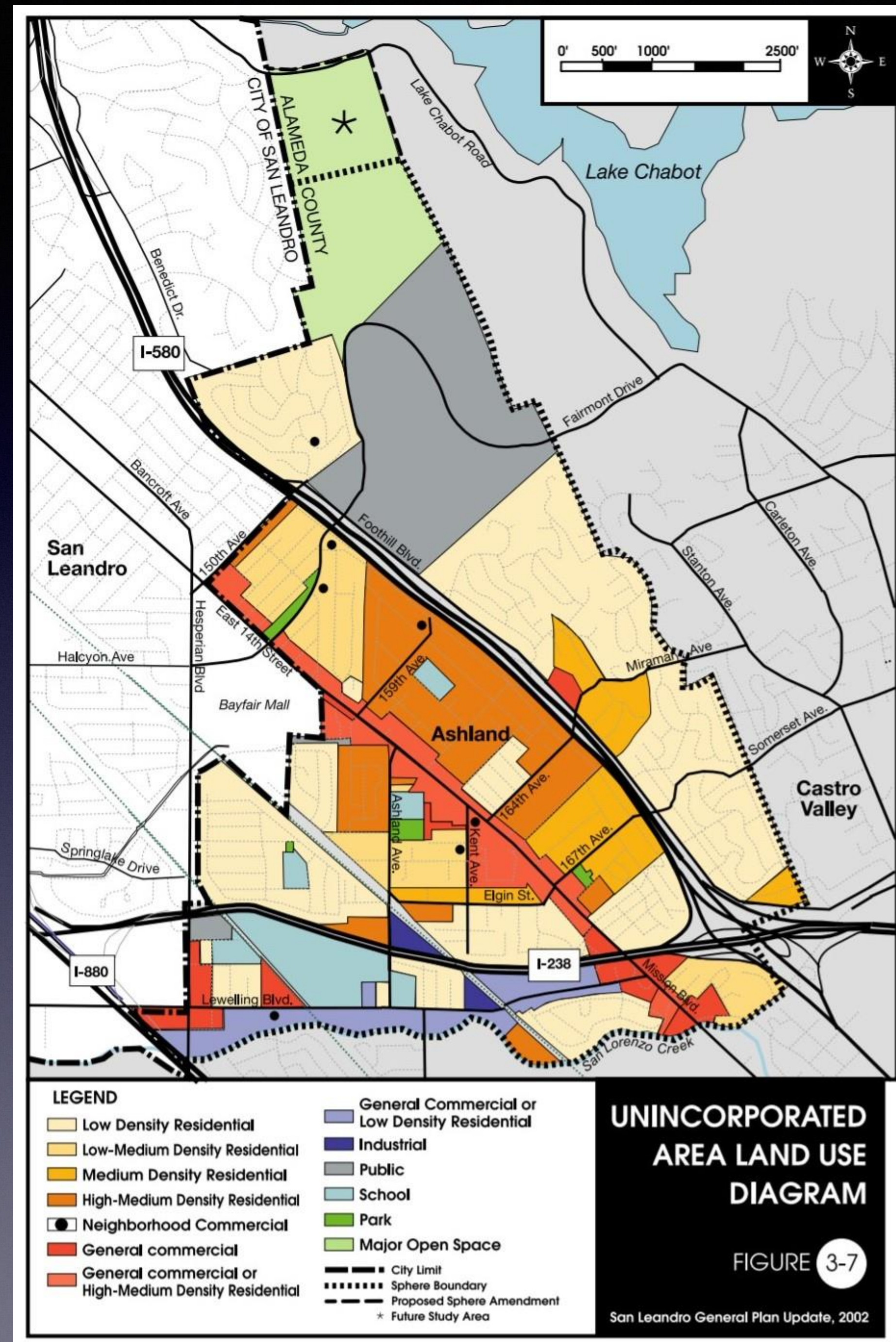
Interest and motivation to act

Presenting evidence and getting buy-in

San Leandro's Sphere of Influence

Why it matters, and getting to the root of the problem:

Fragmentation and Identity



Tech Advisory Committee work

What's been worked on

What's been learned

Understanding Postal Routes

94580_20201129 .XLSX

File Edit View Insert Format Data Tools Help La

100% \$ % .0 .00 123 Default (Ca.

E29 fx San Lorenzo

	A	B	C	D	E
8	B007	PO Boxes			
9	B008	PO Boxes			
10	B009	PO Boxes			
11	B010	PO Boxes			
12	B011	PO Boxes			
13	B012	PO Boxes			
14	B013	PO Boxes			
15	B900	PO Boxes			
16	C000	City			
17	C001	City	San Leandro	San Lorenzo (min)	
18	C003	City			San Lorenzo
19	C004	City			San Lorenzo
20	C005	City			San Lorenzo
21	C006	City		Ashland (mir)	San Lorenzo
22	C007	City		Ashland	San Lorenzo
23	C008	City		Ashland	
24	C009	City			San Lorenzo
25	C012	City		Ashland	
26	C013	City			San Lorenzo
27	C014	City			San Lorenzo
28	C015	City		Ashland	San Lorenzo
29	C016	City			San Lorenzo
30	C018	City			San Lorenzo
31	C019	City		Ashland	
32	C020	City			San Lorenzo
33	C021	City			San Lorenzo
34	C770	City			
35	G000	General Delivery			

Balancing routes for alignment and low impact on USPS logistics

94578_20201129 .XLSX

File Edit View Insert Format Data Tools Help

100% \$ % .0 .00 123

fx Route

	A	B	C	D	E
8	B007	PO Boxes			
9	B008	PO Boxes			
10	C000	City			
11	C002	City		Ashland	
12	C006	City	San Leandro		
13	C008	City		Ashland	
14	C010	City	San Leandro	Ashland	Castro Valley
15	C011	City	San Leandro		
16	C012	City		Castro Valley	
17	C013	City		Ashland	
18	C016	City		Ashland	
19	C017	City	San Leandro		
20	C020	City	San Leandro	Ashland	Castro Valley
21	C021	City		Ashland	
22	C022	City			Castro Valley
23	C023	City	San Leandro		
24	C024	City	San Leandro		
25	C025	City	San Leandro		
26	C026	City	San Leandro		
27	C027	City		Castro Valley	
28	C028	City	San Leandro		
29	C029	City	San Leandro		
30	C030	City	San Leandro		
31	C031	City		Castro Valley	Ashland
32	C032	City	San Leandro		
33	C033	City		Ashland	
34	C036	City	San Leandro	Ashland	
35	C041	City	San Leandro	Ashland	Castro Valley
36	C770	City			
37					

Next Steps

Meet with USPS Bay Valley District Manager Eddie Morgan Jr.

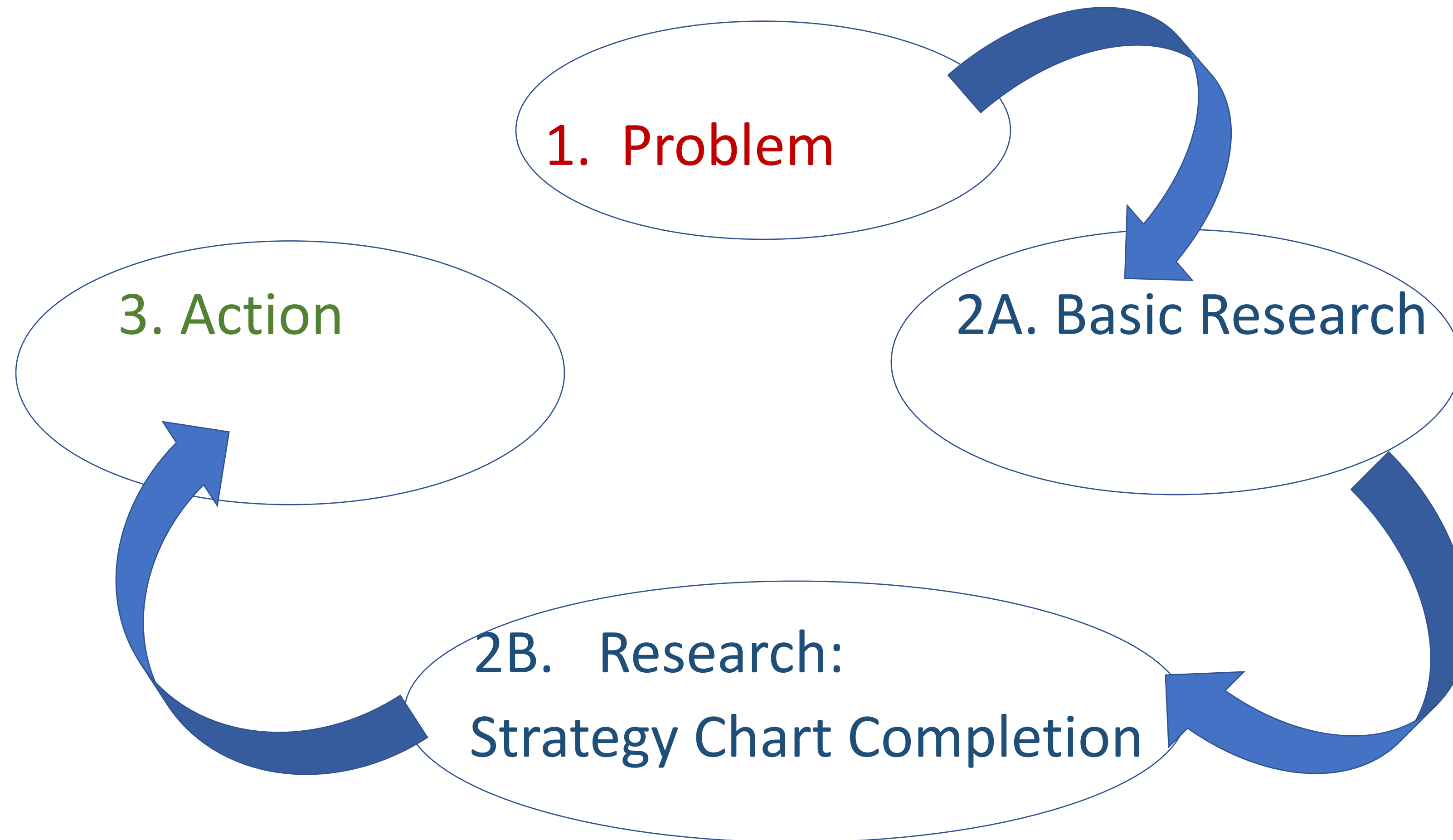
Meet with Paul Sanfter from City of San Leandro

Determine next steps with City of Hayward

Revisit Goals and Strategy

Where we are
in the organizing process

Process for addressing the problem



Organizing for a Solution

What stage are we in now?

1. Identify the Problem: *What is the problem, **generally**, we are trying to solve?*


2a. Basic Research: *Research all aspects of this problem, including:*

- Our assumptions – is the problem really what we thought it was?
- What does the data show?
- What are the unintended consequences,
- Possible solutions,
- Who is responsible, etc.

2b. Research - Strategy Chart Completion: *Continue researching until you are clear on...*

- **Issue Definition:** *Restate the problem, above, as an issue or set of issues with specific solutions*
- **Goals:** *What do we want to happen, specifically? Are they measurable, specific, measurable, immediate & attainable?*
- **Target/s:** *Who is the person or persons who can give us what we want*
- **Tactics:** *Think through the actions/s we will take to get our targets/s to pay attention to us.*
- **Allies:** *Who supports our goals, & can bring their power to bear in advocating for the change we seek?*

3. Action: *Implement the strategy chart!*

A large, glowing green question mark is centered on a dark green background. The question mark has a bright, neon-like glow and a slight 3D effect. Inside the upper loop of the question mark, the text "Q&A" is written in a bold, black, sans-serif font.

Q&A